

Knitting Machinery

东莞市航星针织机械有限公司
Dong Guan HangXing Knitting Machinery Co.,Ltd

地址：广东省东莞市大岭山镇大片美村大片美路73号航星科技园
Address: Hang Xing STP, No.73 Da Pian Mei Road, Da Pian Mei Village, Da Ling Shan Twon,
Dongguan, Guangdong, China.
Moble: +86-139 2588 9881 刘先生 Mr.Liu(Chairman)
Moble: +86-136 4281 1497 戴先生 Vicent Dai(Sales Director)



WhatsApp



WeChat

E-mail: hxvincentdai@dghangxing.com hx01@dghangxing.com hx02@dghangxing.com
www.dghangxing.com

品牌铸就价值
BRAND CAUSING THE VALUE



CONTENTS

目 录

企业简介 Company Introduction	/01
产品介绍 Production Introduction	/03
技术参数 Technical Parameters	/37
管理架构 Management Struct	/39
企业文化 Company Culture	/40
资质证书 Certification	/41
技术研发 Technology Research & Development	/42
销售网络 Selling Network	/43





航星机械 HANGXING KNITTING MACHINERY

航星针织机械有限公司成立于1995年（前身航升精密五金），拥有120000平米的自有产业园，总部位于广东省东莞市，主要生产“特种提花（+调线）机型和特种单双面（+开幅）机型”，分公司位于福建漳州，主要生产常规机型，是国内（中国大陆）第一家拥有全系列调线提花机型的标杆企业。我们拥有一支集研发、设计、生产的专业技术团队，并获得几十项国家专利，两项国际专利。优势产品包括：电脑调线大圆机系列、电脑调线提花大圆机系列、电脑移圈罗纹大圆机系列、粗针（3G-10G）和密针（32G-40G）提花系列，其中多功能起脚提花机填补了国内行业空白。

航星机械竭诚欢迎海内外客户莅临指导，洽谈业务，我们诚挚地希望为各位提供优质的产品和优良的服务，为您创造价值，共创双赢！

“HangXing Knitting Machinery Co., Ltd.” was established in 1995 (formerly known as HangSheng Precision Hardware). It owns a 120,000 SQM industrial park and is headquartered in Dongguan City, Guangdong Province, China. The company primarily manufactures specialized jacquard(+stripe) circular knitting machines and specialized single/double(+open width) circular knitting machines. Its subsidiary located in Zhangzhou, Fujian Province focuses on producing conventional circular knitting machines. It is the first benchmark enterprise in Mainland China to possess a full range of stripper jacquard knitting machines. We have a professional technical team integrating R&D, design, and production, and have obtained dozens of national patents and two international patents. Superior Products including: Computerized stripper circular knitting machine series, Computerized stripper jacquard circular knitting machine series, Computerized rib and transferred circular knitting machine series, thick needle(3G-10G) and thin needle(32G-40G) jacquard circular knitting machine series. Among them, the multi-functional boundary jacquard machine series fills gap in the domestic industry.

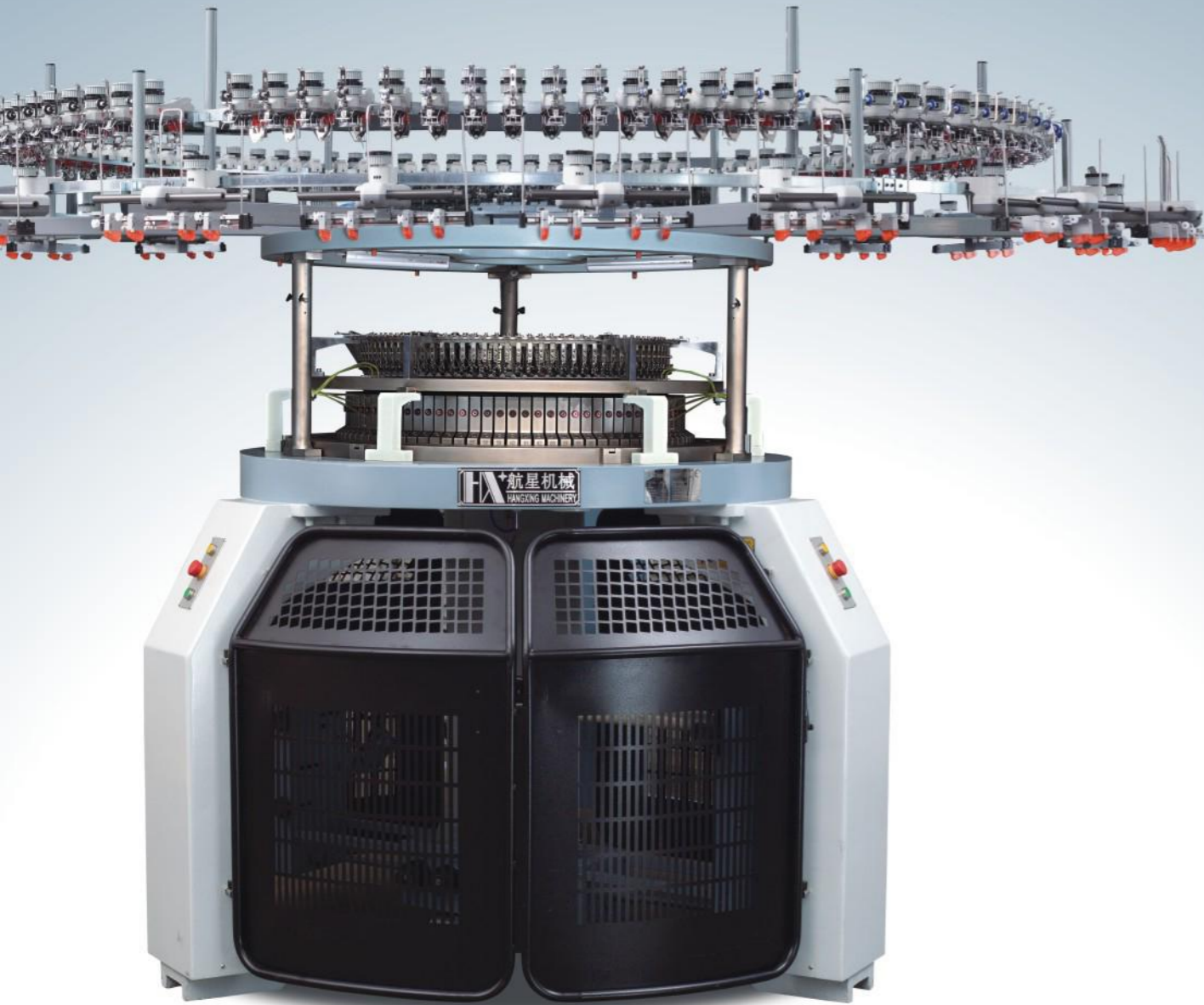
“HangXing Knitting Machinery Co.,Ltd.” heartily welcomes domestic and international customers to visit and business cooperate. We genuinely look forward to providing every customer with high-quality products and excellent services, creating value for you, and achieving mutual success.



COMPANY INTRODUCTION

企业简介

www.dghangxing.com



HX-A-SM
SINGLE JERSEY CIRCULAR KNITTING
MACHINE THREE THREAD FLEECE

单面机 三线卫衣机

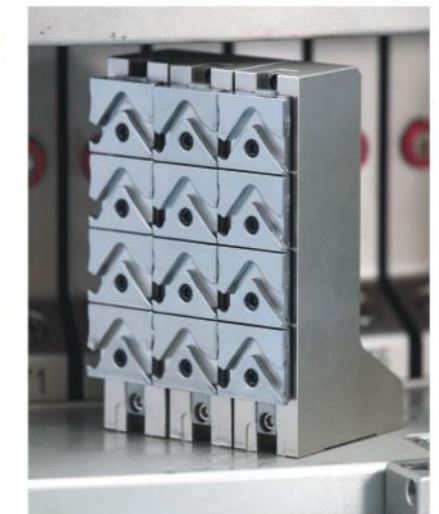


适用原料 MATERIAL

纯棉、化纤、混纺、人棉、真丝……
Cotton, Polyester, T/C, Rayon, Silk……

机台特性 MACHINE CHARACTERISTIC

HX-A-SM 专用部件 THE PARTS FOR HX-A-SM ONLY



- 自研系统采用ARM架构的微处理控制器、触屏式面板，生产数据通信，纱长可视化。
- 心脏部件采用航空钛铝合金材料，机身轻、转速高，易散热，延长耗材寿命。
- 压针旋钮专利设计，往复精度高，减少50%调机时间，满足高精密织物需求。
- The self-developed system is equipped with an ARM architecture-based microprocessor controller and a touch-screen panel, production data communication and yarn length visualization.
- The heart components are made of aviation titanium aluminum alloy material, processed in one piece for universal use. With a light weight body, high rotation speed, and efficient heat dissipation for extended consumable lifespan.
- Patented presser needle knob design: High reciprocating precision, reduced adjustment time by 50%, meeting high-precision fabric requirements.

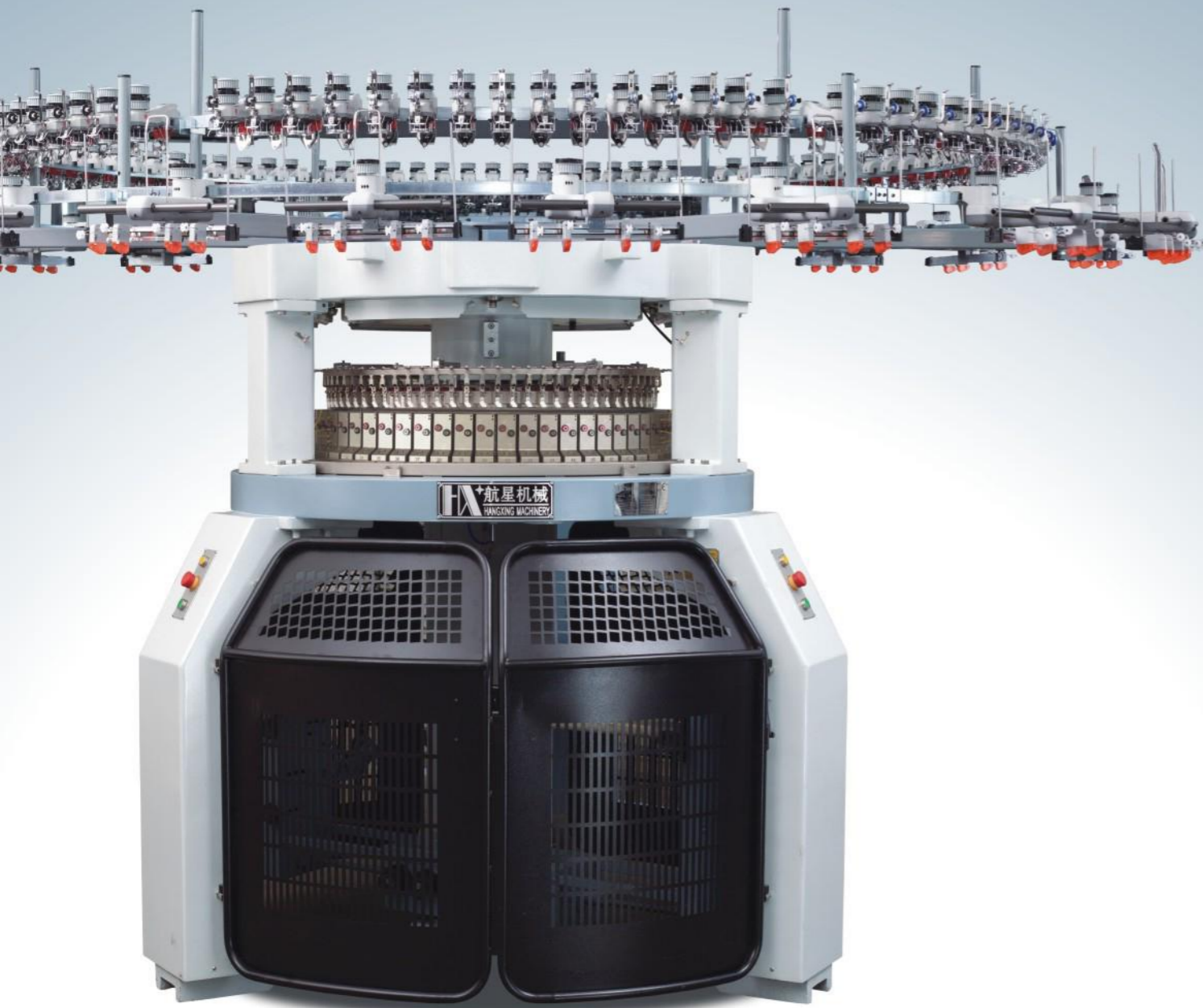
常规机型参数 REGULAR MODEL

FEEDER RATE	筒径 DIA	针距 GAUGE	路数 FEEDER	可选配 OPTIONAL
LT-A-DM3.0	30"-40"	7G-46G	90F-120F	卫衣配套 Fleece set
LT-A-DM3.2	30"-40"	7G-46G	96F-126F	

产量参照表 PRODUCTION REFERENCE TABLE

布种 Fabric	机型 Model	尺寸 DIA	针数 GAUGE	路数 FEEDER	转速/分钟 Speed/min (RPM)	重量 Weight (KG)	24小时产量 24-hour output(KG)	安装尺寸 Install space(MM) 宽W*长L*高H
卫衣布 Fleece	HX-A-SM 单面机/卫衣机	30"	18G	90F	32	1700KG	450(+20%)	4800*3800*3000
		30"	28G	90F	32	1700KG	400(+20%)	4800*3800*3000
		34"	18G	102F	30	1900KG	550(+20%)	5000*4000*3000
		34"	28G	102F	30	1900KG	500(+20%)	5000*4000*3000
		38"	18G	112F	28	2300KG	600(+20%)	5200*4200*3000
		38"	28G	112F	28	2300KG	550(+20%)	5200*4200*3000

(通用) 温度(Temperature): 5-60℃ 油耗(Oil consumption): 0.15-0.26L/DAY 耗电(Power consumption): 2.2-2.8KW/H
气压(Air press): 3KG/BAR 气耗(Air consumption): 0.3-0.4m³/L/min 纱织(棉纱)Sewing(cotton yarn): 18G→30S/1 28G→40S/1
注: 以上数据基于常规工艺 Above data is based on conventional process (100%生产效率参考值 *100% Production Efficiency Reference Value*)



HX-A-DM
DOUBLE JERSEY INTERLOCK &
RIB CIRCULAR KNITTING MACHINE

双面机 罗纹机



适用原料 MATERIAL

纯棉、化纤、混纺、人棉、真丝……
Cotton, Polyester, T/C, Rayon, Silk……

机台特性 MACHINE CHARACTERISTIC

HX-A-DM 专用部件 THE PARTS FOR HX-A-DM ONLY



- 自研系统采用ARM架构的微处理控制器、触屏式面板，生产数据通信，纱长可视化。
- 上盘分体专利设计，减少60%机顶精度校对时间，精度控在0.02MM。
- 下鞍座双滑块设计，减少改三角组织时间，提升布种研发效率。
- 心脏部件采用航空钛铝合金材料，机身轻、转速高，易散热，延长耗材寿命。
- 压针旋钮专利设计，往复精度高，减少50%调机时间，满足高精密织物需求。
- The self-developed system is equipped with an ARM architecture-based microprocessor controller and a touch-screen panel, production data communication and yarn length visualization.
- Upper plate split patented design: it reduces the calibration time for on-top precision by 60%, with a control accuracy of 0.02mm.
- Dual-slider design for the cylinder cam box reduces time in changing cam configurations and improve fabric type R&D efficiency.
- The heart components are made of aviation titanium aluminum alloy material, processed in one piece for universal use. With a light weight body, high rotation speed, and efficient heat dissipation for extended consumable lifespan.
- Patented presser needle knob design: High reciprocating precision, reduced adjustment time by 50%, meeting high-precision fabric requirements.

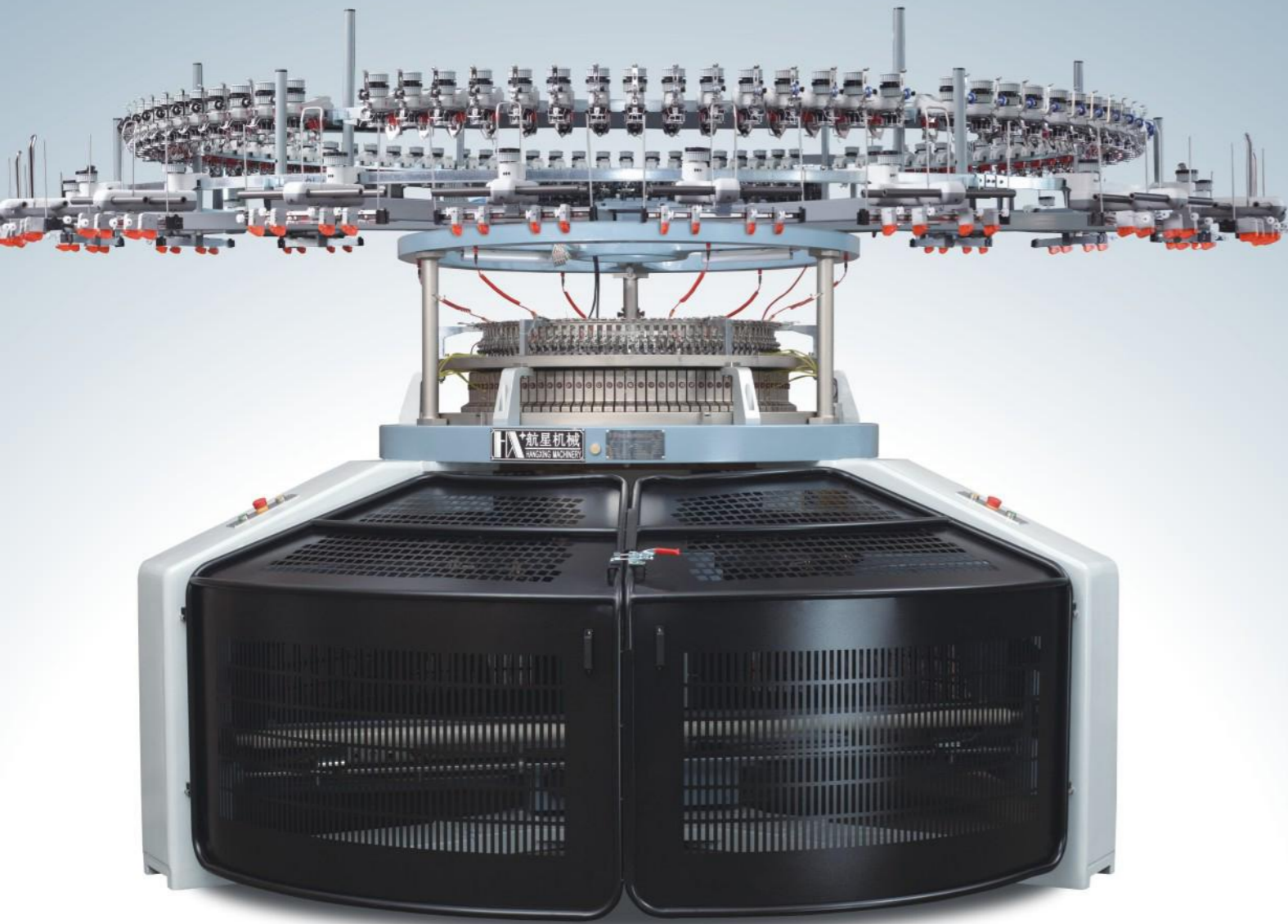
常规机型参数 REGULAR MODEL

FEEDER RATE	筒径 DIA	针距 GAUGE	路数 FEEDER
LT-A-DM2.2	30"-46"	14G-50G	64F-96F
LT-A-DM2.8	30"-38"	18G-50G	84F-108F

产量参照表 PRODUCTION REFERENCE TABLE

布种 Fabric	机型 Model	尺寸 DIA	针数 GAUGE	路数 FEEDER	转速/分钟 Speed/min (RPM)	重量 Weight (KG)	24小时产量 24-hour output(KG)	安装尺寸 Install space(MM) 宽W*长L*高H
双面罗纹布 Double Rib	HX-A-DM 双面机/罗纹机	30"	18G	64F	28	2600KG	350(+20%)	4800*3800*3000
		30"	28G	72F	28	2600KG	400(+20%)	4800*3800*3000
		34"	18G	72F	26	3000KG	400(+20%)	5000*4000*3000
		34"	28G	84F	26	3000KG	420(+20%)	5000*4000*3000
		38"	18G	84F	25	3400KG	420(+20%)	5200*4200*3000
		38"	28G	90F	25	3400KG	450(+20%)	5200*4200*3000

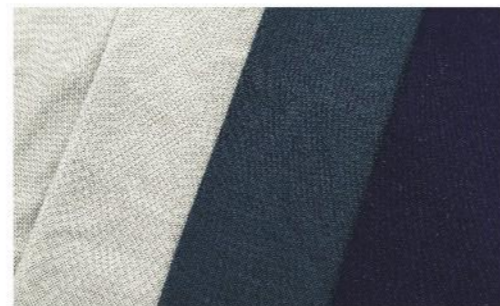
(通用) 温度(Temperature): 5-60℃ 油耗(Oil consumption): 0.15-0.26L/DAY 电耗(Power consumption): 2.2-2.8KW/H
气压(Air press): 3KG/BAR 气耗(Air consumption): 0.3-0.4m³/L/min 纱织(棉纱)Sewing(cotton yarn): 18G→32S/1 28G→50S/1
注: 以上数据基于常规工艺 Above data is based on conventional process (100%生产效率参考值 "100% Production Efficiency Reference Value")



HX-A-KS

SINGLE JERSEY OPEN WIDTH
CIRCULAR KNITTING
MACHINE

单面开幅机

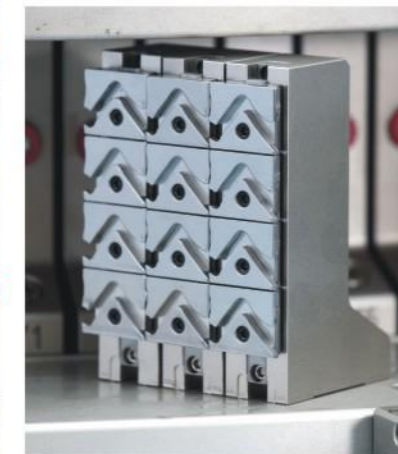


适用原料 MATERIAL

纯棉、化纤、混纺、人棉、真丝……
Cotton, Polyester, T/C, Rayon, Silk……

机台特性 MACHINE CHARACTERISTIC

HX-A-KS 专用部件 THE PARTS FOR HX-A-KS ONLY



- 自研系统采用ARM架构的微处理控制器、触屏式面板，生产数据通信，纱长可视化。
- 心脏部件采用航空钛铝合金材料，机身轻、转速高，易散热，延长耗材寿命。
- 压针旋钮专利设计，往复精度高，减少50%调机时间，满足高精密织物需求。
- 可选配电子开幅布架，拉力更稳定，适合敏感材料。
- The self-developed system is equipped with an ARM architecture-based microprocessor controller and a touch-screen panel, production data communication and yarn length visualization.
- The heart components are made of aviation titanium aluminum alloy material, processed in one piece for universal use. With a light weight body, high rotation speed, and efficient heat dissipation for extended consumable lifespan.
- Patented presser needle knob design: High reciprocating precision, reduced adjustment time by 50%, meeting high-precision fabric requirements.
- An electronic open-width take down is available as an option, which provides more stable tension and is suitable for sensitive materials.

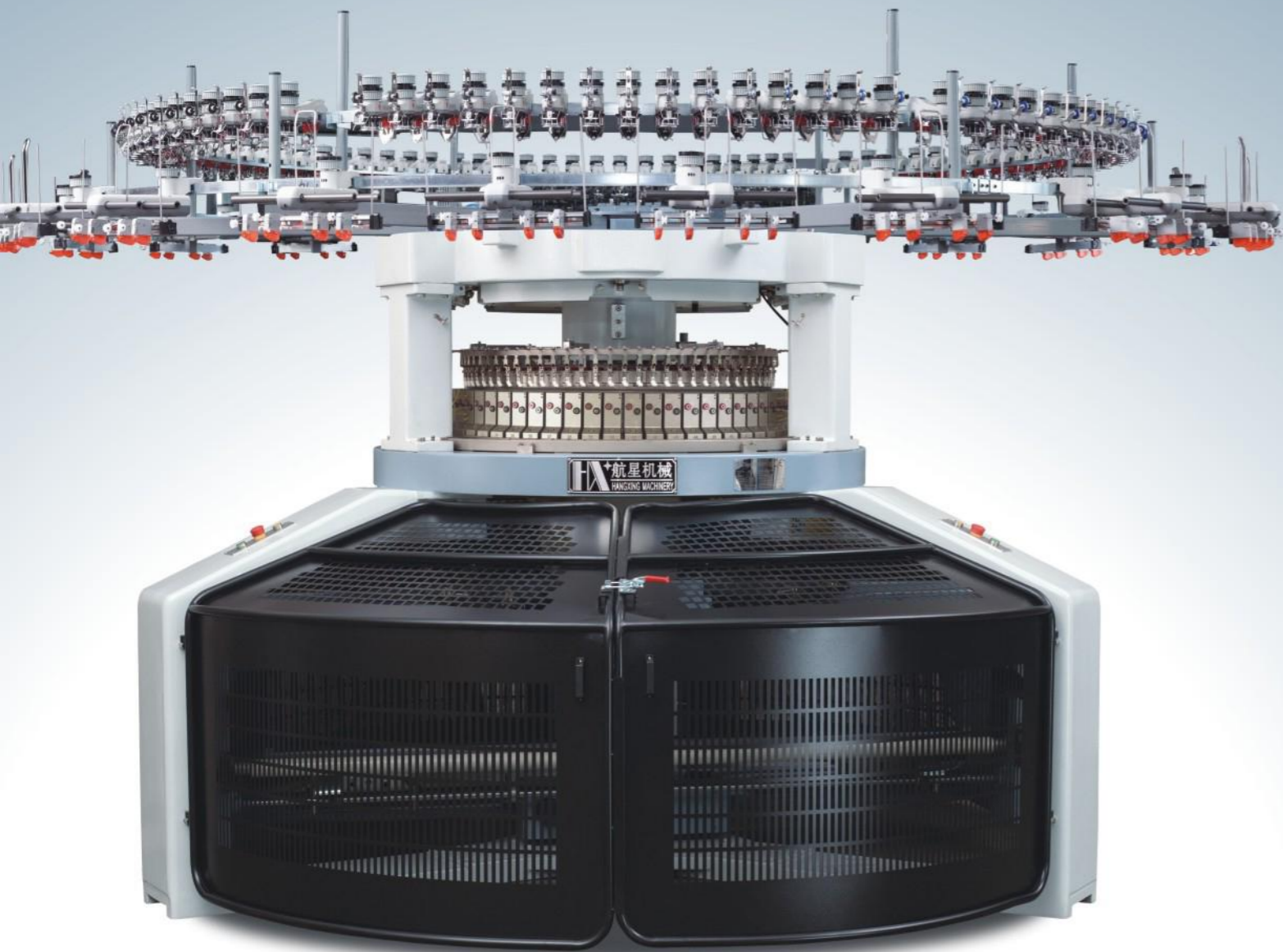
常规机型参数 REGULAR MODEL

筒径 DIA	针距 GAUGE	路数 FEEDER
30"	5G-42G	90F-96F
32"		96F-102F
34"		102F-108F
范围(Dia Range): 26"-40"		

产量参照表 PRODUCTION REFERENCE TABLE

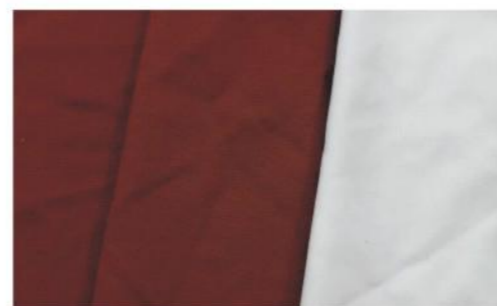
布种 Fabric	机型 Model	尺寸 DIA	针数 GAUGE	路数 FEEDER	转速/分钟 Speed/min (RPM)	重量 Weight (KG)	24小时产量 24-hour output(KG)	安装尺寸 Install space(MM) 宽W*长L*高H
单面布 Single jersey	HX-A-KS 单面开幅机	30"	18G	90F	30	3000KG	420(+20%)	6800*4800*3000
		30"	28G	90F	30	3000KG	370(+20%)	6800*4800*3000
		34"	18G	102F	28	3400KG	520(+20%)	7000*5000*3000
		34"	28G	102F	28	3400KG	470(+20%)	7000*5000*3000
		38"	18G	112F	26	3800KG	560(+20%)	7200*5200*3000
		38"	28G	112F	26	3800KG	510(+20%)	7200*5200*3000

(通用) 温度(Temperature): 5-60℃ 油耗(Oil consumption): 0.15-0.26L/DAY 耗电(Power consumption): 2.2-2.8KW/H
气压(Air press): 3KG/BAR 气耗(Air consumption): 0.3-0.4m³/L/min 纱织(棉纱)Sewing(cotton yarn): 18G→30S/1 28G→40S/1
注: 以上数据基于常规工艺 Above data is based on conventional process (100%生产效率参考值 "100% Production Efficiency Reference Value")



HX-A-KD
DOUBLE JERSEY OPEN WIDTH
CIRCULAR KNITTING
MACHINE

双面开幅机

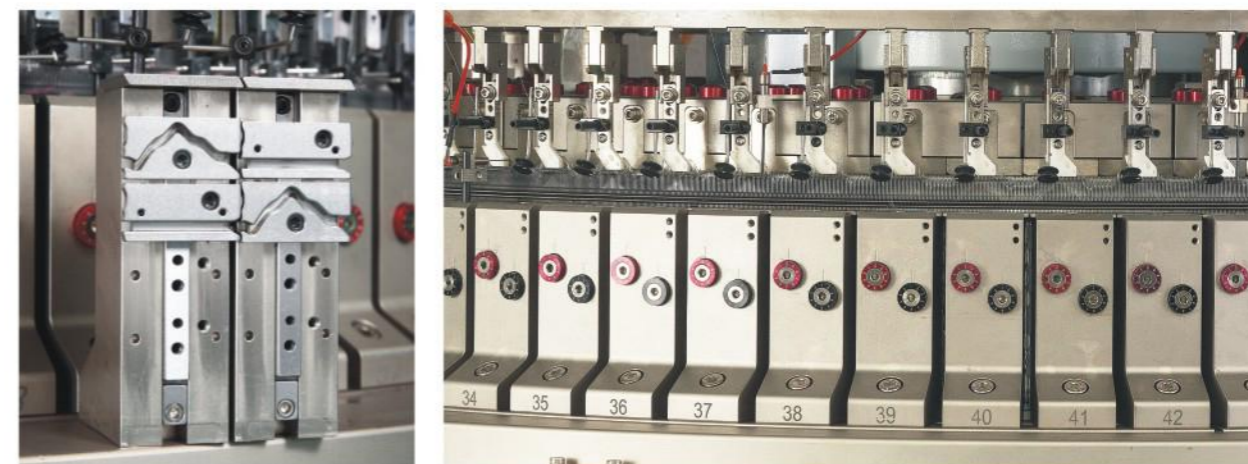


适用原料 MATERIAL

纯棉、化纤、混纺、人棉、真丝……
Cotton, Polyester, T/C, Rayon, Silk……

机台特性 MACHINE CHARACTERISTIC

HX-A-KD 专用部件 THE PARTS FOR HX-A-KD ONLY



- 自研系统采用ARM架构的微处理控制器、触屏式面板，生产数据通信，纱长可视化。
- 心脏部件采用航空钛铝合金材料，机身轻、转速高，易散热，延长耗材寿命。
- 压针旋钮专利设计，往复精度高，减少50%调机时间，满足高精密织物需求。
- 可选配电子开幅布架，拉力更稳定，适合敏感材料。
- The self-developed system is equipped with an ARM architecture-based microprocessor controller and a touch-screen panel, production data communication and yarn length visualization.
- The heart components are made of aviation titanium aluminum alloy material, processed in one piece for universal use. With a light weight body, high rotation speed, and efficient heat dissipation for extended consumable lifespan;
- Patented presser needle knob design: High reciprocating precision, reduced adjustment time by 50%, meeting high-precision fabric requirements.
- An electronic open-width take down is available as an option, which provides more stable tension and is suitable for sensitive materials.

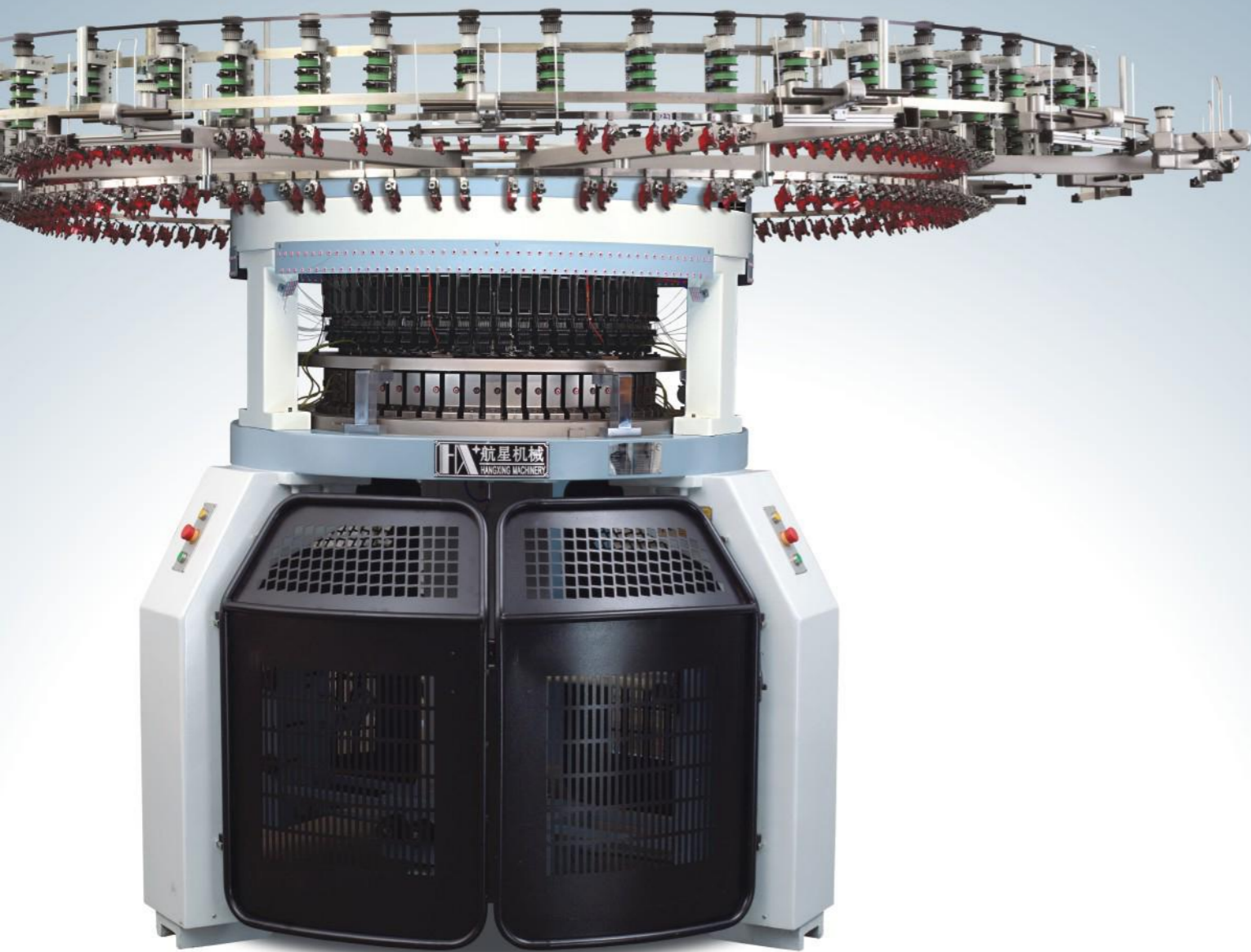
常规机型参数 REGULAR MODEL

FEEDER RATE	筒径 DIA	针距 GAUGE	路数 FEEDER
LT-A-DM2.2	30"-46"	14G-50G	64F-96F
LT-A-DM2.8	30"-38"	18G-50G	84F-108F

产量参照表 PRODUCTION REFERENCE TABLE

布种 Fabric	机型 Model	尺寸 DIA	针数 GUAGE	路数 FEEDER	转速/分钟 Speed/min (RPM)	重量 Weight (KG)	24小时产量 24-hour output(KG)	安装尺寸 Install space(MM) 宽W*长L*高H
双面罗纹布 Double Rib	HX-A-KD 双面开幅机	30"	18G	64F	28	2800KG	390(+20%)	6800*4800*3200
		30"	28G	72F	28	2800KG	350(+20%)	6800*4800*3200
		34"	18G	72F	26	3200KG	480(+20%)	7000*5000*3200
		34"	28G	84F	26	3200KG	440(+20%)	7000*5000*3200
		38"	18G	84F	25	3600KG	540(+20%)	7200*5200*3200
		38"	28G	90F	25	3600KG	490(+20%)	7200*5200*3200

(通用) 温度(Temperature): 5-60℃ 油耗(Oil consumption): 0.15-0.26L/DAY 耗电(Power consumption): 2.2-2.8KW/H
气压(Air press): 3KG/BAR 气耗(Air consumption): 0.3-0.4m³/L/min 纱织(棉纱)Sewing(cotton yarn): 18G→32S/1 28G→50S/1
注: 以上数据基于常规工艺 Above data is based on conventional process (100%生产效率参考值 "100% Production Efficiency Reference Value")



HX-A-ST
SINGLE JERSEY COMPUTERIZED
AUTO-STRIPED CIRCULAR
KNITTING MACHINE

单面电脑调线机

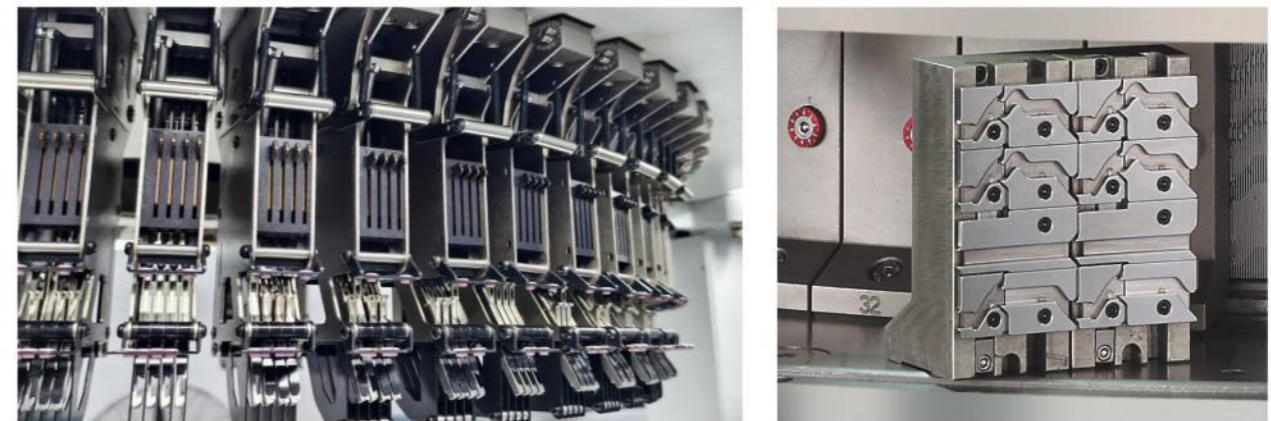


适用原料 MATERIAL

纯棉、化纤、混纺、人棉、真丝……
Cotton, Polyester, T/C, Rayon, Silk……

机台特性 MACHINE CHARACTERISTIC

HX-A-ST 专用部件 THE PARTS FOR HX-A-ST ONLY



- 自研调线系统采用ARM架构的微处理控制器、触屏式面板，支持花型预览。
- 心脏部件采用航空钛铝合金材料，机身轻、转速高，易散热，延长耗材寿命。
- 压针旋钮专利设计，往复精度高，减少50%调机时间，满足高精密织物需求。
- 航星新款变色头：免拆卸，结构稳定，易清理，不积飞毛。
- 航星新款变色头：采用专利设计，针对不同成分、粗细的编织原料，都能切削自如，夹线牢固且无沙尾。
- The self-developed stripe system is equipped with an ARM architecture-based microprocessor controller and a touch-screen panel, and supports pattern preview.
- The heart components are made of aviation titanium aluminum alloy material, processed in one piece for universal use. With a light weight body, high rotation speed, and efficient heat dissipation for extended consumable lifespan.
- Patented presser needle knob design: High reciprocating precision, reduced adjustment time by 50%, meeting high-precision fabric requirements.
- Hangxing's new finger set: Dismantling-free, structurally stable, easy cleaning and fluff-free.
- Hangxing's new finger set: Adopts a patented design, which ensures smooth cutting, secure thread clamping, and no yarn tail residue for weaving materials of different compositions and thicknesses.

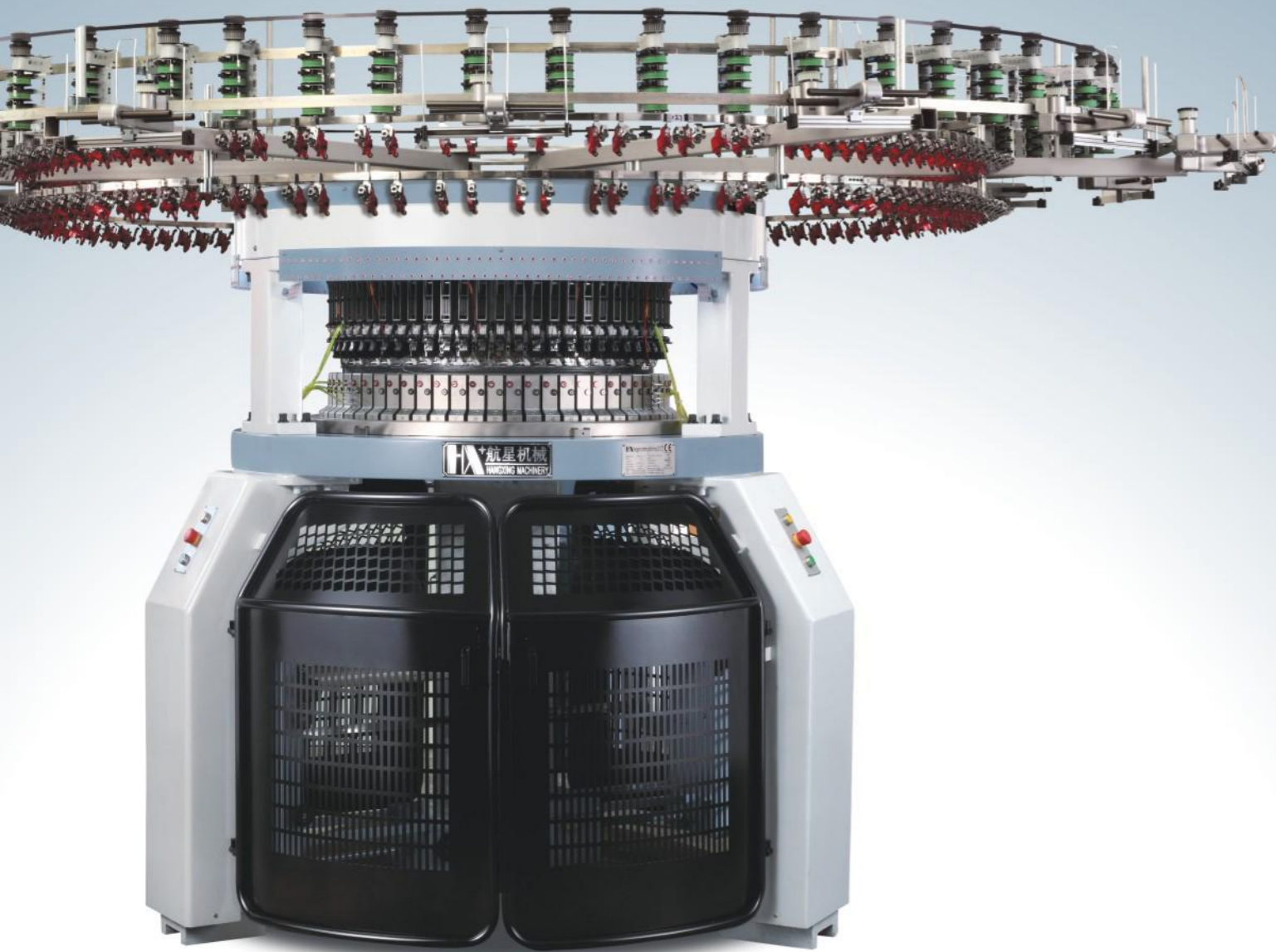
常规机型参数 REGULAR MODEL

筒径 DIA	针距 GAUGE	路数 FEEDER	间色 COLOR	可选配 OPTIONAL
30"	7G-32G	54F/64F	6/4	三线卫衣 Three thread fleece
32"		54F/64F		
34"		54F/72F		
范围(Dia Range):28"-42"				

产量参照表 PRODUCTION REFERENCE TABLE

布种 Fabric	机型 Model	尺寸 DIA	针数 GAUGE	路数 FEEDER	转速/分钟 Speed/min (RPM)	重量 Weight (KG)	24小时产量 24-hour output(KG)	安装尺寸 Install space(MM) 宽W*长L*高H
单面调线布 Single jersey auto-stripe	HX-A-ST 单面电脑调线机	30"	18G	48F	28	3000KG	210(+20%)	4600*4600*3200
		30"	24G/28G	60F	26	3000KG	185(+20%)	5500*5500*3200
		34"	18G	64F	26	3400KG	250(+20%)	5800*5800*3200
		34"	24G/28G	72F	25	3400KG	240(+20%)	6500*6500*3200
		38"	18G	72F	26	3800KG	300(+20%)	6500*6500*3200
		38"	24G/28G	80F	24	3800KG	280(+20%)	7000*7000*3200

(通用) 温度(Temperature): 5-60℃ 油耗(Oil consumption): 0.15-0.26L/DAY 电耗(Power consumption): 2.2-2.8KW/H
气压(Air press): 3KG/BAR 气耗(Air consumption): 0.3-0.4m³/L/min 纱织(棉纱)Sewing(cotton yarn): 18G→30S/1 28G→40S/1
注: 以上数据基于常规工艺 Above data is based on conventional process (100%生产效率参考值 "100% Production Efficiency Reference Value")



HX-A-DT

DOUBLE JERSEY COMPUTERIZED
AUTO-STRIPE CIRCULAR
KNITTING MACHINE

双面电脑调线机



适用原料 MATERIAL

纯棉、化纤、混纺、人棉、真丝……
Cotton, Polyester, T/C, Rayon, Silk……

机台特性 MACHINE CHARACTERISTIC

HX-A-DT 专用部件 THE PARTS FOR HX-A-DT ONLY



- 自研调线系统采用ARM架构的微处理控制器、触屏式面板，支持花型预览。
- 心脏部件采用航空钛铝合金材料，机身轻、转速高，易散热，延长耗材寿命。
- 压针旋钮专利设计，往复精度高，减少50%调机时间，满足高精密织物需求。
- 航星新款变色头：免拆卸，结构稳定，易清理，不积飞毛。
- 航星新款变色头：采用专利设计，针对不同成分、粗细的编织原料，都能切削自如，夹线牢固且无沙尾。

- The self-developed stripe system is equipped with an ARM architecture-based microprocessor controller and a touch-screen panel, and supports pattern preview.
- The heart components are made of aviation titanium aluminum alloy material, processed in one piece for universal use. With a light weight body, high rotation speed, and efficient heat dissipation for extended consumable lifespan.
- Patented presser needle knob design: High reciprocating precision, reduced adjustment time by 50%, meeting high-precision fabric requirements.
- Hangxing's new finger set: Dismantling-free, structurally stable, easy cleaning and fluff-free.
- Hangxing's new finger set: Adopts a patented design, which ensures smooth cutting, secure thread clamping, and no yarn tail residue for weaving materials of different compositions and thicknesses.

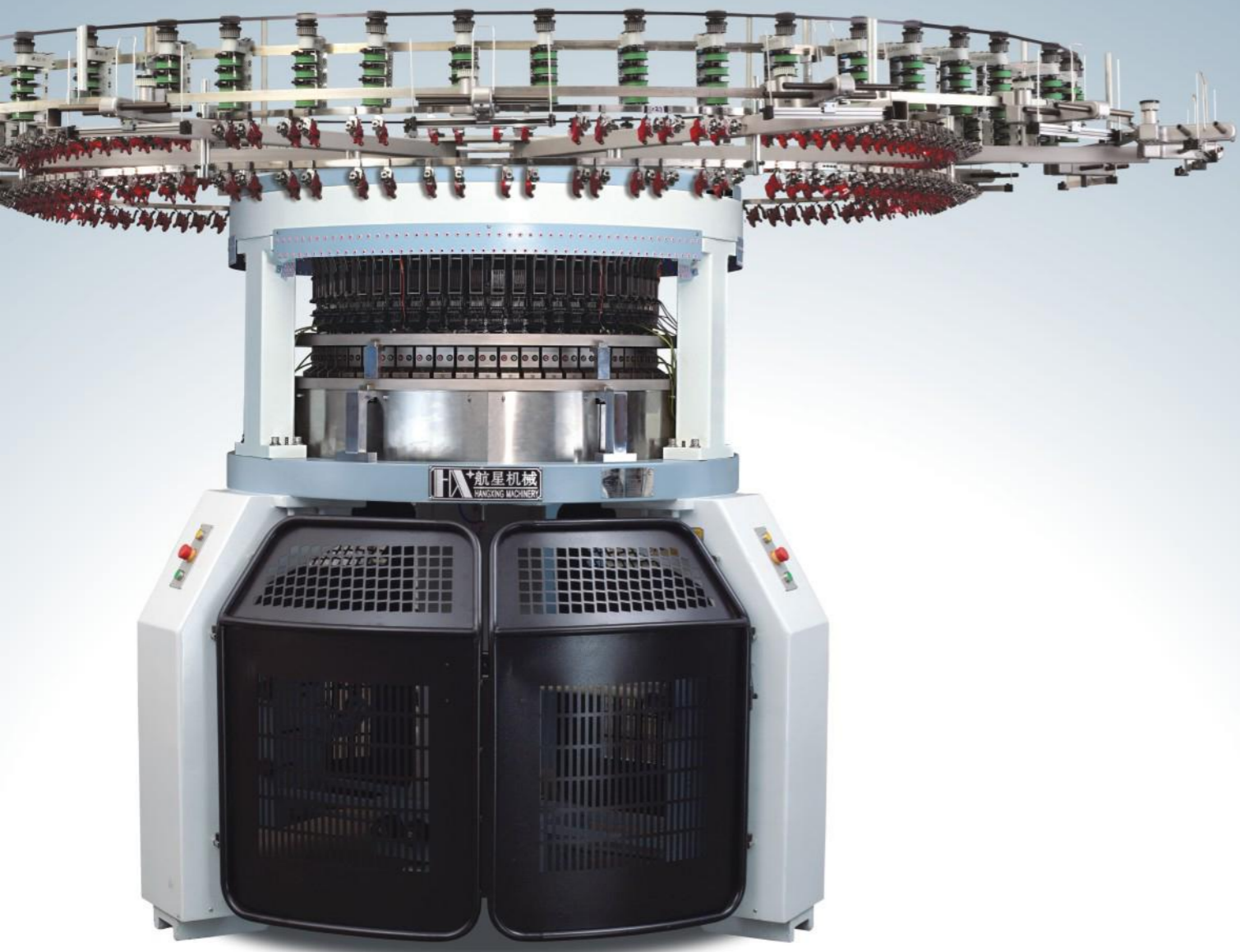
常规机型参数 REGULAR MODEL

筒径 DIA	针距 GAUGE	路数 FEEDER	间色 COLOR
34"	7G-32G	48F/60F	6/4
36"		48F/60F	
38"		54F/60F	
范围(Dia Range):30"-46"			

产量参照表 PRODUCTION REFERENCE TABLE

布种 Fabric	机型 Model	尺寸 DIA	针数 GAUGE	路数 FEEDER	转速/分钟 Speed/min (RPM)	重量 Weight (KG)	24小时产量 24-hour output(KG)	安装尺寸 Install space(MM) 宽W*长L*高H
双面调线布 Double jersey auto-stripe	HX-A-DT 双面电脑调线机	30"	18G	48F	24	3400KG	260(+20%)	4600*4600*3200
		30"	28G	60F	24	3400KG	230(+20%)	5500*5500*3200
		34"	18G	64F	22	3800KG	300(+20%)	5800*5800*3200
		34"	28G	72F	22	3800KG	275(+20%)	6500*6500*3200
		38"	18G	72F	20	4200KG	310(+20%)	6500*6500*3200
		38"	28G	80F	20	4200KG	290(+20%)	7000*7000*3200

(通用) 温度(Temperature): 5-60℃ 油耗(Oil consumption): 0.15-0.26L/DAY 电耗(Power consumption): 2.2-2.8KW/H
气压(Air press): 3KG/BAR 气耗(Air consumption): 0.3-0.4m³/L/min 纱织(棉纱)Sewing(cotton yarn): 18G→30S/1 28G→50S/1
注: 以上数据基于常规工艺 Above data is based on conventional process (100%生产效率参考值 "100% Production Efficiency Reference Value")



HX-A-STT
SINGLE JERSEY COMPUTERIZED
AUTO-STRIPES & JACQUARD
CIRCULAR KNITTING MACHINE

单面电脑调线提花机

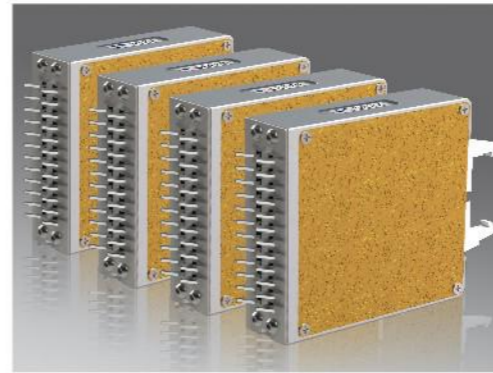


适用原料 MATERIAL

纯棉、化纤、混纺、人棉、真丝……
Cotton, Polyester, T/C, Rayon, Silk……

机台特性 MACHINE CHARACTERISTIC

HX-A-STT 专用部件 THE PARTS FOR HX-A-STT ONLY



- 自研调线提花系统采用ARM架构的微处理控制器、触屏式面板，支持花型预览。
- 心脏部件采用航空钛铝合金材料，机身轻、转速高，易散热，延长耗材寿命。
- 压针旋钮专利设计，往复精度高，减少50%调机时间，满足高精密织物需求。
- 航星新款变色头：免拆卸，结构稳定，易清理，不积飞毛。
- 航星新款变色头：采用专利设计，针对不同成分、粗细的编织原料，都能切削自如，夹线牢固且无沙尾。
- 采用高速三位工（成圈、集圈、浮线）不发热选针技术，极大的延长了选针器的使用寿命，降低了使用成本。
- The self-developed stripe & jacquard system is equipped with an ARM architecture-based microprocessor controller and a touch-screen panel, and supports pattern preview.
- The heart components are made of aviation titanium aluminum alloy material, processed in one piece for universal use. With a light weight body, high rotation speed, and efficient heat dissipation for extended consumable lifespan.
- Patented presser needle knob design: High reciprocating precision, reduced adjustment time by 50%, meeting high-precision fabric requirements.
- Hangxing's new finger set: Dismantling-free, structurally stable, easy cleaning and fluff-free.
- Hangxing's new finger set: Adopts a patented design, which ensures smooth cutting, secure thread clamping, and no yarn tail residue for weaving materials of different compositions and thicknesses.
- Using high-speed three level(Knit,Tuck,Welt)non-heating needle selection technology significantly extends the service life of the actuator and reduces operating costs.

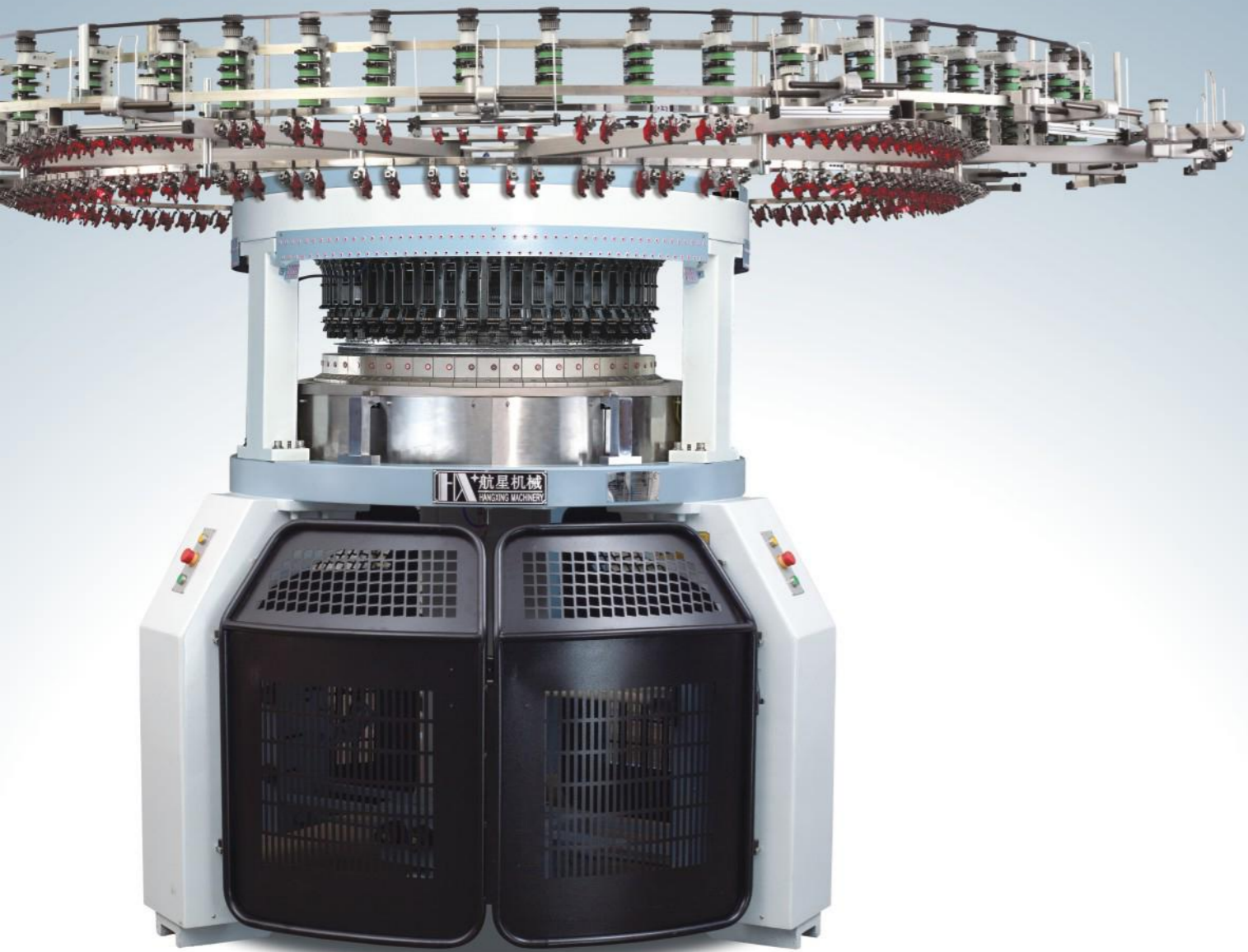
常规机型参数 REGULAR MODEL

筒径 DIA	针距 GAUGE	路数 FEEDER	间色 COLOR	可选配 OPTIONAL
30"	7G-32G	42F-60F	6/4	网眼配套 Mesh set
32"		54F-60F		
34"		48F-60F		
范围(Dia Range): 30"-38"				

产量参照表 PRODUCTION REFERENCE TABLE

布种 Fabric	机型 Model	尺寸 DIA	针数 GAUGE	路数 FEEDER	转速/分钟 Speed/min (RPM)	重量 Weight (KG)	24小时产量 24-hour output(KG)	安装尺寸 Install space(MM) 宽W*长L*高H
单面调线提花布 Single jersey auto-stripe jacquard	HX-A-STT 单面电脑 调线大提花机	30"	18G	48F	20	3600KG	150(+20%)	4600*4600*3200
		30"	28G	60F	20	3600KG	140(+20%)	5500*5500*3200
		34"	18G	64F	20	4000KG	200(+20%)	5800*5800*3200
		34"	28G	72F	18	4000KG	180(+20%)	6500*6500*3200
		38"	18G	72F	18	4400KG	210(+20%)	6500*6500*3200
		38"	28G	80F	16	4400KG	190(+20%)	7000*7000*3200

(通用) 温度(Temperature): 5-60℃ 油耗(Oil consumption): 0.15-0.26L/DAY 电耗(Power consumption): 2.2-2.8KW/H
气压(Air press): 3KG/BAR 气耗(Air consumption): 0.3-0.4m³/L/min 纱织(棉纱)Sewing(cotton yarn): 18G→30S/1 28G→40S/1
注: 以上数据基于常规工艺 Above data is based on conventional process (100%生产效率参考值 "100% Production Efficiency Reference Value")



HX-A-DTT
DOUBLE JERSEY COMPUTERIZED
AUTO-STRIP & JACQUARD
CIRCULAR KNITTING MACHINE

双面电脑调线提花机



适用原料 MATERIAL

纯棉、化纤、混纺、人棉、真丝……
Cotton, Polyester, T/C, Rayon, Silk……

机台特性 MACHINE CHARACTERISTIC

HX-A-DTT 专用部件 THE PARTS FOR HX-A-DTT ONLY



- 自研调线提花系统采用ARM架构的微处理控制器、触屏式面板，支持花型预览。
- 心脏部件采用航空钛铝合金材料，机身轻、转速高，易散热，延长耗材寿命。
- 压针旋钮专利设计，往复精度高，减少50%调机时间，满足高精密织物需求。
- 航星新款变色头：免拆卸，结构稳定，易清理，不积飞毛。
- 航星新款变色头：采用专利设计，针对不同成分、粗细的编织原料，都能切削自如，夹线牢固且无沙尾。
- 采用高速三工位（成圈、集圈、浮线）不发热选针技术，极大的延长了选针器的使用寿命，降低了使用成本。
- The self-developed stripe & jacquard system is equipped with an ARM architecture-based microprocessor controller and a touch-screen panel, and supports pattern preview.
- The heart components are made of aviation titanium aluminum alloy material, processed in one piece for universal use. With a light weight body, high rotation speed, and efficient heat dissipation for extended consumable lifespan.
- Patented presser needle knob design: High reciprocating precision, reduced adjustment time by 50%, meeting high-precision fabric requirements.
- Hangxing's new finger set: Dismantling-free, structurally stable, easy cleaning and fluff-free.
- Hangxing's new finger set: Adopts a patented design, which ensures smooth cutting, secure thread clamping, and no yarn tail residue for weaving materials of different compositions and thicknesses.
- Using high-speed three level(Knit,Tuck,Welt)non-heating needle selection technology significantly extends the service life of the actuator and reduces operating costs.

常规机型参数 REGULAR MODEL

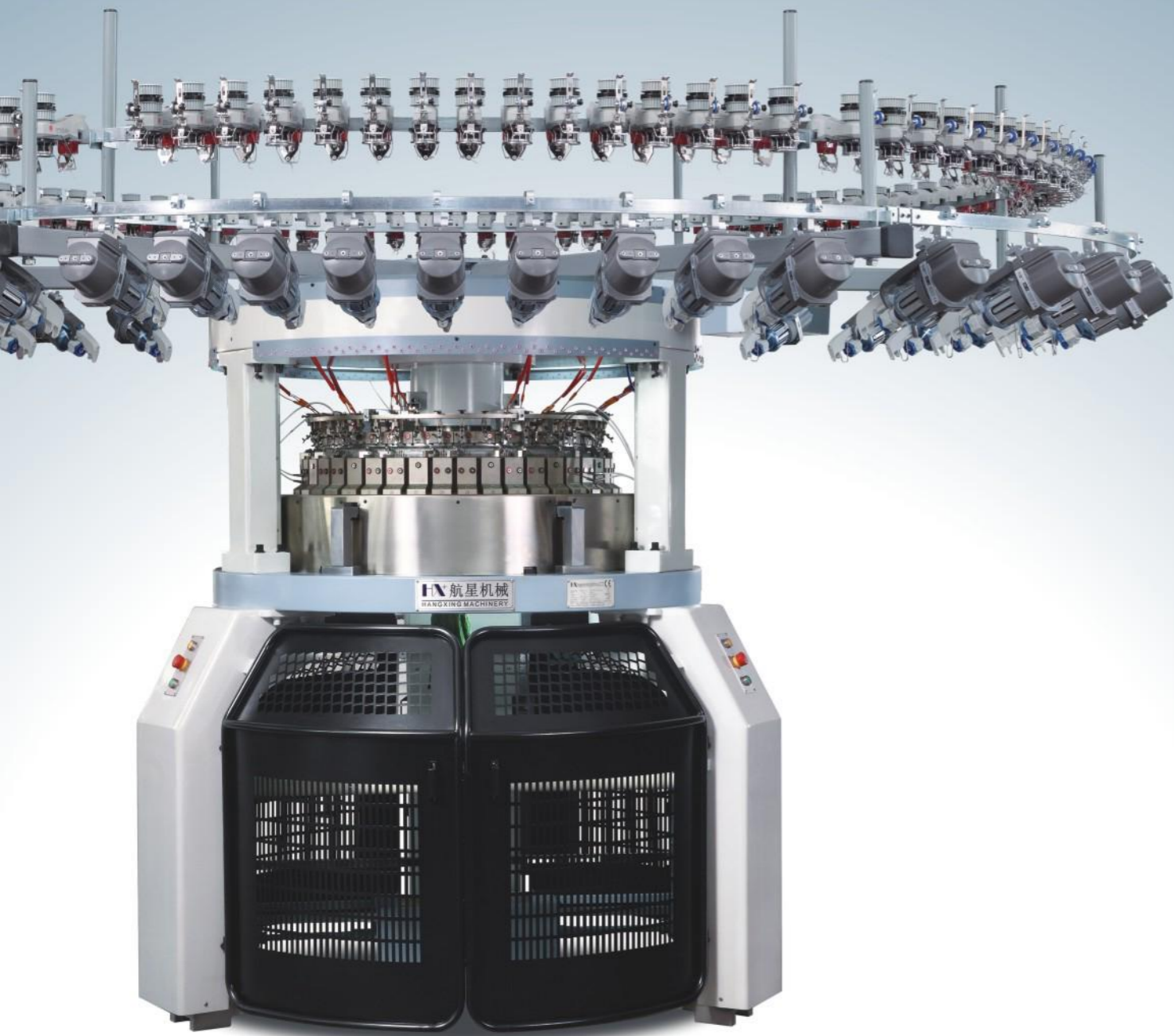
筒径 DIA	针距 GAUGE	路数 FEEDER	间色 COLOR
34"	7G-32G	48F/60F	6/4
36"		48F/72F	
38"		54F/72F	

范围(Dia Range): 30"-38"

产量参照表 PRODUCTION REFERENCE TABLE

布种 Fabric	机型 Model	尺寸 DIA	针数 GAUGE	路数 FEEDER	转速/分钟 Speed/min (RPM)	重量 Weight (KG)	24小时产量 24-hour output(KG)	安装尺寸 Install space(MM) 宽W*长L*高H
双面调线提花布 Double jersey auto-stripe jacquard	HX-A-DTT 双面电脑调线大提花机	30"	18G	48F	20	3600KG	215(+20%)	4600*4600*3200
		30"	28G	60F	18	3600KG	168(+20%)	5500*5500*3200
		34"	18G	64F	18	4000KG	240(+20%)	5800*5800*3200
		34"	28G	72F	17	4000KG	210(+20%)	6500*6500*3200
		38"	18G	72F	16	4400KG	250(+20%)	6500*6500*3200
		38"	28G	80F	15	4400KG	220(+20%)	7000*7000*3200

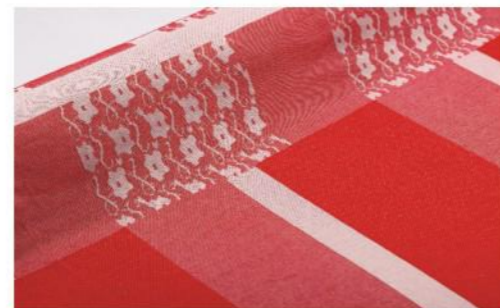
(通用) 温度(Temperature): 5-60℃ 油耗(Oil consumption): 0.15-0.26L/DAY 电耗(Power consumption): 2.2-2.8KW/H
气压(Air press): 3KG/BAR 气耗(Air consumption): 0.3-0.4m³/L/min 纱织(棉纱)Sewing(cotton yarn): 18G→30S/1 28G→50S/1
注: 以上数据基于常规工艺 Above data is based on conventional process (100%生产效率参考值 "100% Production Efficiency Reference Value")



HX-A-RT

COMPUTERIZED RIB & TRANSFERRED JACQUARD CIRCULAR KNITTING MACHINE

电脑移圈罗纹提花机



适用原料 MATERIAL

纯棉、化纤、混纺、人棉、真丝……
Cotton, Polyester, T/C, Rayon, Silk……

机台特性 MACHINE CHARACTERISTIC

HX-A-RT 专用部件 THE PARTS FOR HX-A-RT ONLY



- 自研提花系统采用ARM架构的微处理控制器、触屏式面板，支持花型预览。
- 心脏部件采用航空钛铝合金材料，机身轻、转速高，易散热，延长耗材寿命。
- 压针旋钮专利设计，往复精度高，减少50%调机时间，满足高精密织物需求。
- 采用高速三工位（成圈、集圈、浮线）不发热选针技术，极大的延长了选针器的使用寿命，降低了使用成本。
- The self-develop jacquard system is equipped with an ARM architecture-based microprocessor controller and a touch-screen panel, and supports pattern preview.
- The heart components are made of aviation titanium aluminum alloy material, processed in one piece for universal use. With a light weight body, high rotation speed, and efficient heat dissipation for extended consumable lifespan.
- Patented presser needle knob design: High reciprocating precision, reduced adjustment time by 50%, meeting high-precision fabric requirements.
- Using high-speed three level(Knit,Tuck,Welt)non-heating needle selection technology significantly extends the service life of the selector and reduces operating costs.

常规机型参数 REGULAR MODEL

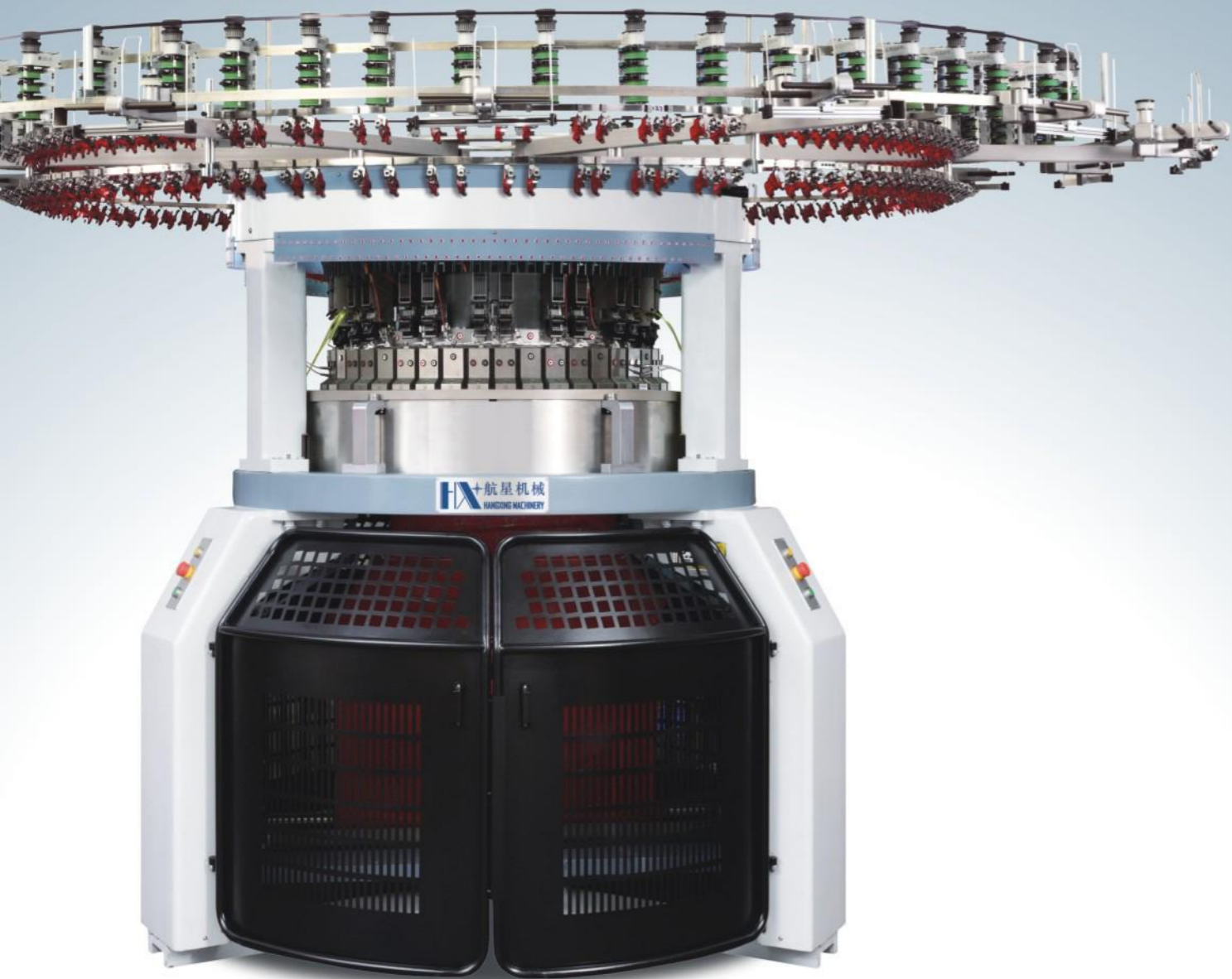
筒径 DIA	针距 GAUGE	路数 FEEDER	可选配 OPTIONAL
34"	7G-12G	32路进纱 16路移圈 32F enter yarn 16F transfer	双面提花配套 Double jersey jacquard set
	14G-24G	36路进纱 18路移圈 36F enter yarn 18F transfer	
38"	7G-12G	36路进纱 18路移圈 36F enter yarn 18F transfer	
	14G-24G	40路进纱 20路移圈 40F enter yarn 20F transfer	

范围(Dia Range):30"-40"

产量参照表 PRODUCTION REFERENCE TABLE

布种 Fabric	机型 Model	尺寸 DIA	针数 GAUGE	路数 FEEDER	转速/分钟 Speed/min (RPM)	重量 Weight (KG)	24小时产量 24-hour output(KG)	安装尺寸 Install space(MM) 宽W*长L*高H
移圈提花 罗纹布 Transfer jacquard	HX-A-RT 电脑移圈 罗纹大提花机	30"	18G	45F	22	3600KG	145(+20%)	4800*3800*3000
		30"	24G	45F	18	3600KG	85(+20%)	4800*3800*3000
		34"	18G	54F	20	4000KG	160(+20%)	5000*4000*3000
		34"	24G	54F	16	4000KG	100(+20%)	5000*4000*3000
		38"	18G	60F	18	4400KG	160(+20%)	5200*4200*3000
		38"	24G	60F	14	4400KG	100(+20%)	5200*4200*3000

(通用) 温度(Temperature): 5-60℃ 油耗(Oil consumption): 0.15-0.26L/DAY 电耗(Power consumption): 2.2-2.8KW/H
气压(Air press): 3KG/BAR 气耗(Air consumption): 0.25-0.3m³/L/min 纱织(棉纱)Sewing(cotton yarn): 18G→30S/1 24G→50S/1
注: 以上数据基于常规工艺 Above data is based on conventional process (100%生产效率参考值 "100% Production Efficiency Reference Value")



HX-A-RTT
 COMPUTERIZED AUTO-STRIBE RIB &
 TRANSFERRED JACQUARD
 CIRCULAR KNITTING MACHINE
 电脑调线移圈罗纹提花机



适用原料 MATERIAL

纯棉、化纤、混纺、人棉、真丝……
 Cotton, Polyester, T/C, Rayon, Silk……

机台特性 MACHINE CHARACTERISTIC

HX-A-RTT 专用部件 THE PARTS FOR HX-A-RTT ONLY



- 自研调线提花系统采用ARM架构的微处理控制器、触屏式面板，支持花型预览。
- 上下单边可以加氨纶，有助于研发高档布样。
- 心脏部件采用航空钛铝合金材料，机身轻、转速高，易散热，延长耗材寿命。
- 压针旋钮专利设计，往复精度高，减少50%调机时间，满足高精密织物需求。
- 航星新款变色头：免拆卸，结构稳定，易清理，不积飞毛。
- 航星新款变色头：采用专利设计，针对不同成分、粗细的编织原料，都能切割自如，夹线牢固且无沙尾。
- 采用高速三工位（成圈、集圈、浮线）不发热选针技术，极大的延长了选针器的使用寿命，降低使用成本。
- The self-developed stripe jacquard system is equipped with an ARM architecture-based microprocessor controller and a touch-screen panel, and supports pattern preview.
- The dial and cylinder single sides can be equipped with lycra, which helps in developing high-end fabric samples.
- The heart components are made of aviation titanium aluminum alloy material, processed in one piece for universal use. With a light weight body, high rotation speed, and efficient heat dissipation for extended consumable lifespan.
- Patented presser needle knob design: High reciprocating precision, reduced adjustment time by 50%, meeting high-precision fabric requirements.
- Hangxing's new finger set: Dismantling-free, structurally stable, easy cleaning and fluff-free.
- Hangxing's new finger set: Adopts a patented design, which ensures smooth cutting, secure thread clamping, and no yarn tail residue for weaving materials of different compositions and thicknesses.
- Using high-speed three level(Knit,Tuck,Welt)non-heating needle selection technology significantly extends the service life of the actuator and reduces operating costs.

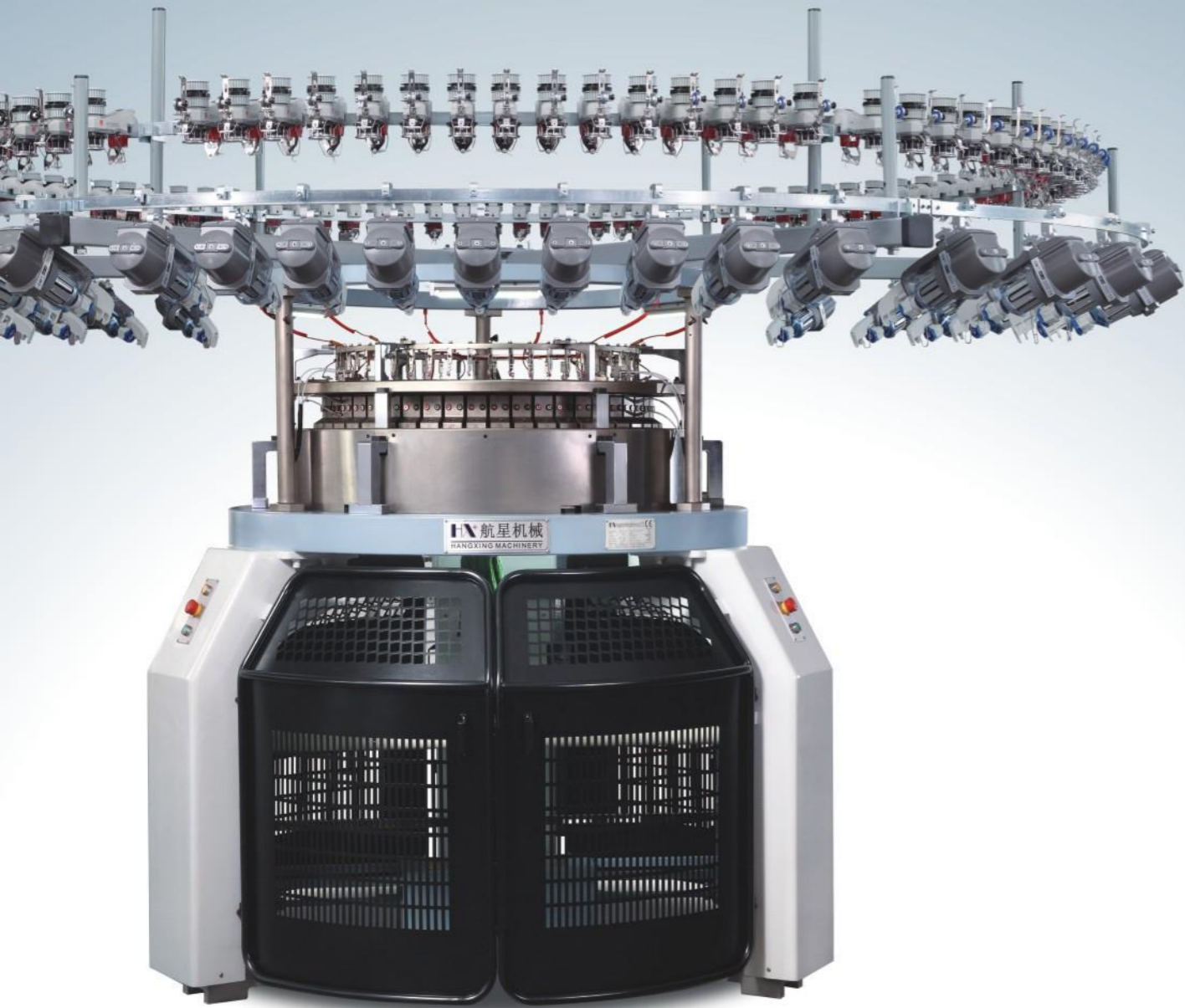
常规机型参数 REGULAR MODEL

筒径 DIA	针距 GAUGE		路数 FEEDER	
34"	7G-14G	14G-24G	42F	54F
36"			45F	57F
38"			48F	60F
范围(Dia Range): 30"-38"				

产量参照表 PRODUCTION REFERENCE TABLE

布种 Fabric	机型 Model	尺寸 DIA	针数 GAUGE	路数 FEEDER	转速 /分钟 Speed/min (RPM)	重量 Weight (KG)	24小时产量 24-hour output(KG)	安装尺寸 Install space(MM) 宽W*长L*高H
调线移圈提花布 Stripe rib jacquard	HX-A-RTT 电脑调线移圈 罗纹大提花机	30"	7G-14G	36F	18	3600KG	260(+/-20%)	4600*4600*3200
		30"	14G-24G	48F	18G/22 24G/18	3600KG	145(+/-20%) 85(+/-20%)	4600*4600*3200
		34"	7G-14G	42F	16	4000KG	280(+/-20%)	5000*5000*3200
		34"	14G-24G	54F	18G/20 24G/16	4000KG	160(+/-20%) 100(+/-20%)	5000*5000*3200
		38"	7G-14G	48F	16	4400KG	280(+/-20%)	5200*5200*3200
		38"	14G-24G	60F	18G/18 24G/14	4400KG	160(+/-20%) 100(+/-20%)	5200*5200*3200

(通用) 温度(Temperature): 5-60℃ 油耗(Oil consumption): 0.15-0.26L/DAY 电耗(Power consumption): 2.2-2.8KW/H
 气压(Air press): 3KG/BAR 气耗(Air consumption): 0.25-0.3m³/L/min 纱织(棉纱)Sewing(cotton yarn): 7G-14G→10S/1-16S/1 14G-24G→30S/1 50S/1
 注: 以上数据基于常规工艺 Above data is based on conventional process (100%生产效率参考值 "100% Production Efficiency Reference Value")



HX-A-SH

SINGLE JERSEY COMPUTERIZED
JACQUARD CIRCULAR
KNITTING MACHINE

单面电脑提花机

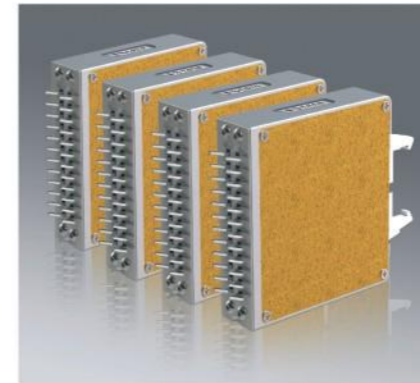


适用原料 MATERIAL

纯棉、化纤、混纺、人棉、真丝……
Cotton, Polyester, T/C, Rayon, Silk……

机台特性 MACHINE CHARACTERISTIC

HX-A-SH 专用部件 THE PARTS FOR HX-A-SH ONLY



- 自研提花系统采用ARM架构的微处理器控制器、触屏式面板，支持花型预览。
- 心脏部件采用航空钛铝合金材料，机身轻、转速高，易散热，延长耗材寿命。
- 压针旋钮专利设计，往复精度高，减少50%调机时间，满足高精密织物需求。
- 采用高速三工位（成圈、集圈、浮线）不发热选针技术，极大的延长了选针器的使用寿命，降低了使用成本。
- The self-developed jacquard system is equipped with an ARM architecture-based microprocessor controller and a touch-screen panel, and supports pattern preview.
- The heart components are made of aviation titanium aluminum alloy material, processed in one piece for universal use. With a light weight body, high rotation speed, and efficient heat dissipation for extended consumable lifespan.
- Patented presser needle knob design: High reciprocating precision, reduced adjustment time by 50%, meeting high-precision fabric requirements.
- Using high-speed three level(Knit,Tuck,Welt)non-heating needle selection technology significantly extends the service life of the actuator and reduces operating costs.

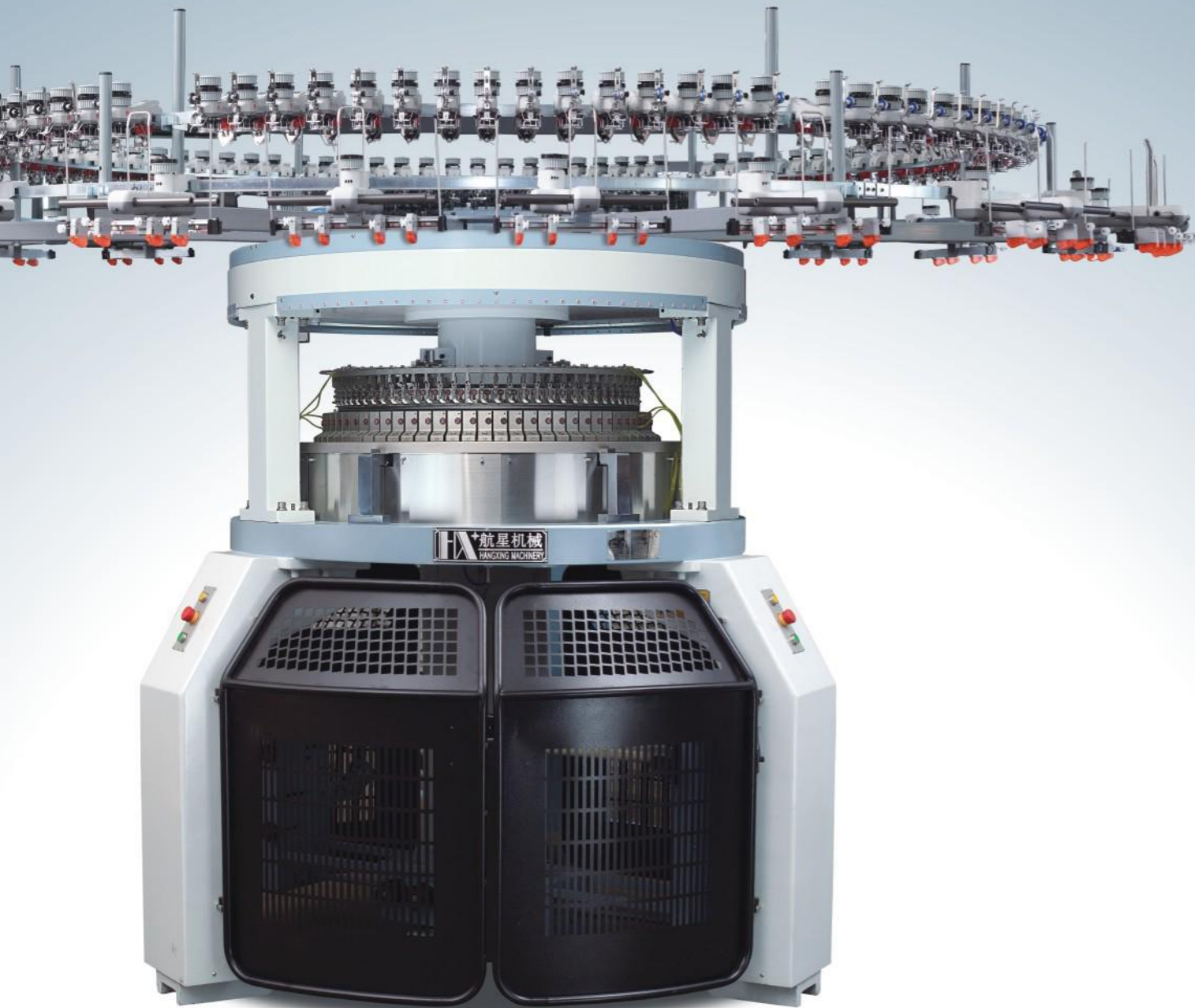
常规机型参数 REGULAR MODEL

筒径 DIA	针距 GAUGE	路数 FEEDER
30"	7G-30G	42F-60F
32"		50F-72F
34"		42F-72F
范围(Dia Range): 26"-40"		

产量参照表 PRODUCTION REFERENCE TABLE

布种 Fabric	机型 Model	尺寸 DIA	针数 GAUGE	路数 FEEDER	转速/分钟 Speed/min (RPM)	重量 Weight (KG)	24小时产量 24-hour output(KG)	安装尺寸 Install space(MM) 宽W*长L*高H
单面提花布 Single jacquard	HX-A-SH 单面电脑提花机	30"	18G	48F	22	2800KG	160(+20%)	4800*3800*3000
		30"	28G	60F	20	2800KG	140(+20%)	4800*3800*3000
		34"	18G	64F	20	3200KG	200(+20%)	5000*4000*3000
		34"	28G	72F	18	3200KG	180(+20%)	5000*4000*3000
		38"	18G	72F	18	3600KG	210(+20%)	5200*4200*3000
		38"	28G	80F	16	3600KG	190(+20%)	5200*4200*3000

(通用) 温度(Temperature): 5-60℃ 油耗(Oil consumption): 0.15-0.26L/DAY 耗电(Power consumption): 2.2-2.8KW/H
气压(Air press): 3KG/BAR 气耗(Air consumption): 0.3-0.4m³/L/min 纱织(棉纱)Sewing(cotton yarn): 18G→30S/1 28G→40S/1
注: 以上数据基于常规工艺 Above data is based on conventional process (100%生产效率参考值 "100% Production Efficiency Reference Value")



HX-A-DH

DOUBLE JERSEY COMPUTERIZED
JACQUARD CIRCULAR
KNITTING MACHINE

双面电脑提花机

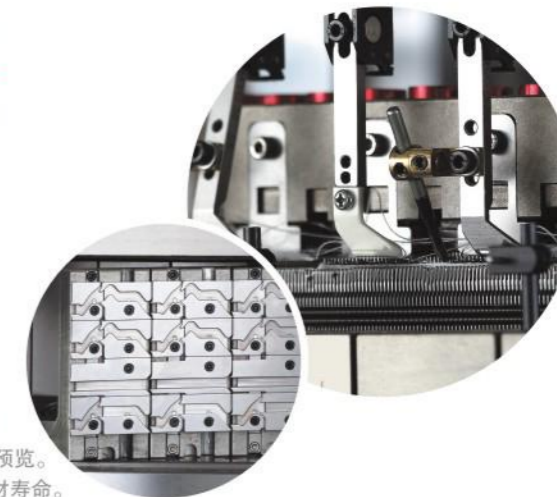


适用原料 MATERIAL

纯棉、化纤、混纺、人棉、真丝……
Cotton, Polyester, T/C, Rayon, Silk……

机台特性 MACHINE CHARACTERISTIC

HX-A-DH 专用部件 THE PARTS FOR HX-A-DH ONLY



- 自研提花系统采用ARM架构的微处理控制器、触屏式面板，支持花型预览。
- 心脏部件采用航空钛铝合金材料，机身轻、转速高，易散热，延长耗材寿命。
- 压针旋钮专利设计，往复精度高，减少50%调机时间，满足高精密织物需求。
- 采用高速三工位（成圈、集圈、浮线）不发热选针技术，极大的延长了选针器的使用寿命，降低了使用成本。
- The self-developed jacquard system is equipped with an ARM architecture-based microprocessor controller and a touch-screen panel, and supports pattern preview.
- The heart components are made of aviation titanium aluminum alloy material, processed in one piece for universal use. With a light weight body, high rotation speed, and efficient heat dissipation for extended consumable lifespan.
- Patented presser needle knob design: High reciprocating precision, reduced adjustment time by 50%, meeting high-precision fabric requirements.
- Using high-speed three level(Knit,Tuck,Welt)non-heating needle selection technology significantly extends the service life of the actuator and reduces operating costs.

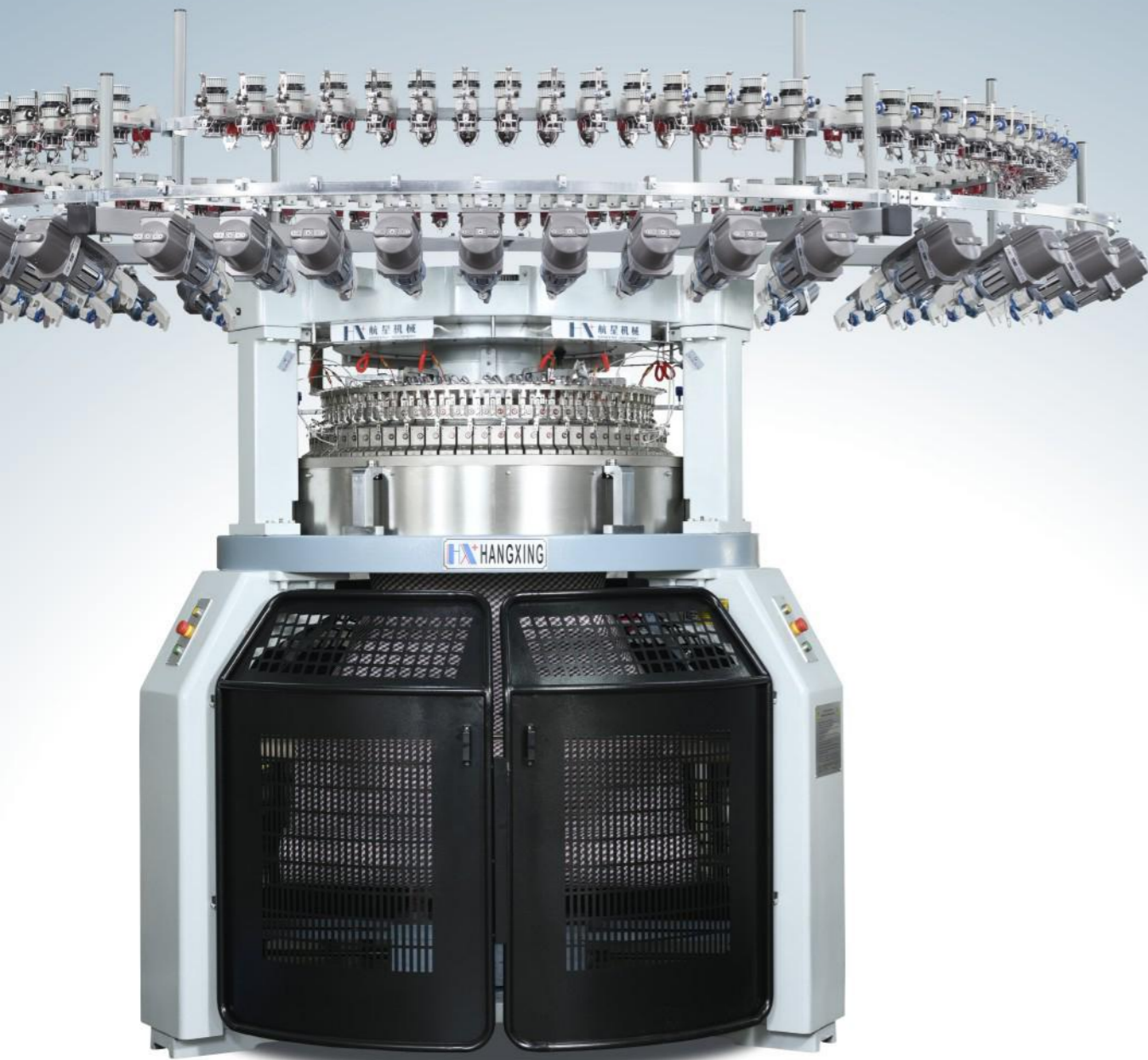
常规机型参数 REGULAR MODEL

筒径 DIA	针距 GAUGE	路数 FEEDER	可选配 OPTIONAL
30"	7G-36G	42F/54F	床上用品配套 Bedding set
34"		42F/60F/72F	
38"		48F/72F	
范围(Dia Range):30"-40"			

产量参照表 PRODUCTION REFERENCE TABLE

布种 Fabric	机型 Model	尺寸 DIA	针数 GAUGE	路数 FEEDER	转速/分钟 Speed/min (RPM)	重量 Weight (KG)	24小时产量 24-hour output(KG)	安装尺寸 Install space(MM) 宽W*长L*高H
双面提花布 Double jacquard	HX-A-DH 双面 电脑提花机	30"	18G	48F	22	3400KG	235(+20%)	4800*3800*3000
		30"	28G	60F	20	3400KG	185(+20%)	4800*3800*3000
		34"	18G	64F	20	3800KG	270(+20%)	5000*4000*3000
		34"	28G	72F	18	3800KG	220(+20%)	5000*4000*3000
		38"	18G	72F	18	4200KG	280(+20%)	5200*4200*3000
		38"	28G	80F	16	4200KG	230(+20%)	5200*4200*3000

(通用) 温度(Temperature): 5-60℃ 油耗(Oil consumption): 0.15-0.26L/DAY 耗电(Power consumption): 2.2-2.8KW/H
气压(Air press): 3KG/BAR 气耗(Air consumption): 0.3-0.4m³/L/min 纱织(棉纱)Sewing(cotton yarn): 18G→30S/1 28G→50S/1
注: 以上数据基于常规工艺 Above data is based on conventional process (100%生产效率参考值 "100% Production Efficiency Reference Value")



HX-A-LH
DIAL&CYLINDER DOUBLE SIDE
COMPUTERIZED JACQUARD
CIRCULAR KNITTING MACHINE

上下两面电脑提花机

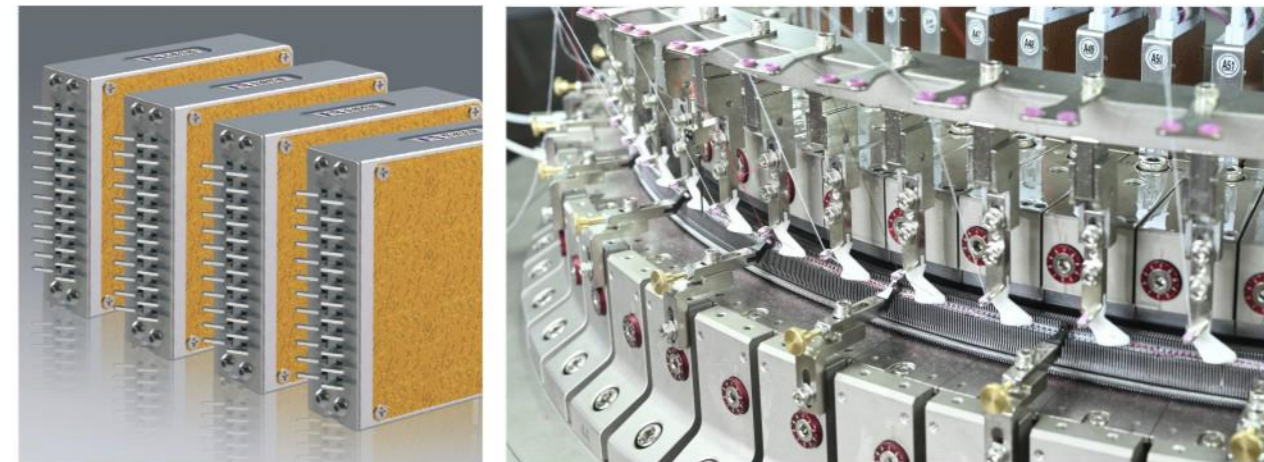


适用原料 MATERIAL

纯棉、化纤、混纺、人棉、真丝……
Cotton, Polyester, T/C, Rayon, Silk……

机台特性 MACHINE CHARACTERISTIC

HX-A-LH 专用部件 THE PARTS FOR HX-A-LH ONLY



- 自研提花系统采用ARM架构的微处理控制器、触屏式面板，支持花型预览。
- 心脏部件采用航空钛铝合金材料，机身轻、转速高，易散热，延长耗材寿命。
- 压针旋钮专利设计，往复精度高，减少50%调机时间，满足高精密织物需求。
- 采用上二（成圈，浮线），下三（成圈，集圈，浮线）高速不发热选针技术，极大的延长了选针器的使用寿命，降低了使用成本。
- The self-developed jacquard system is equipped with an ARM architecture-based microprocessor controller and a touch-screen panel, and supports pattern preview.
- The heart components are made of aviation titanium aluminum alloy material, processed in one piece for universal use. With a light weight body, high rotation speed, and efficient heat dissipation for extended consumable lifespan.
- Patented presser needle knob design: High reciprocating precision, reduced adjustment time by 50%, meeting high-precision fabric requirements.
- Using the upper-two(Knit,Welt) and lower-three(Knit,Tuck,Welt) high-speed non-heating needle selection technology significantly extends the service life of the actuator and reduces operating costs.

常规机型参数 REGULAR MODEL

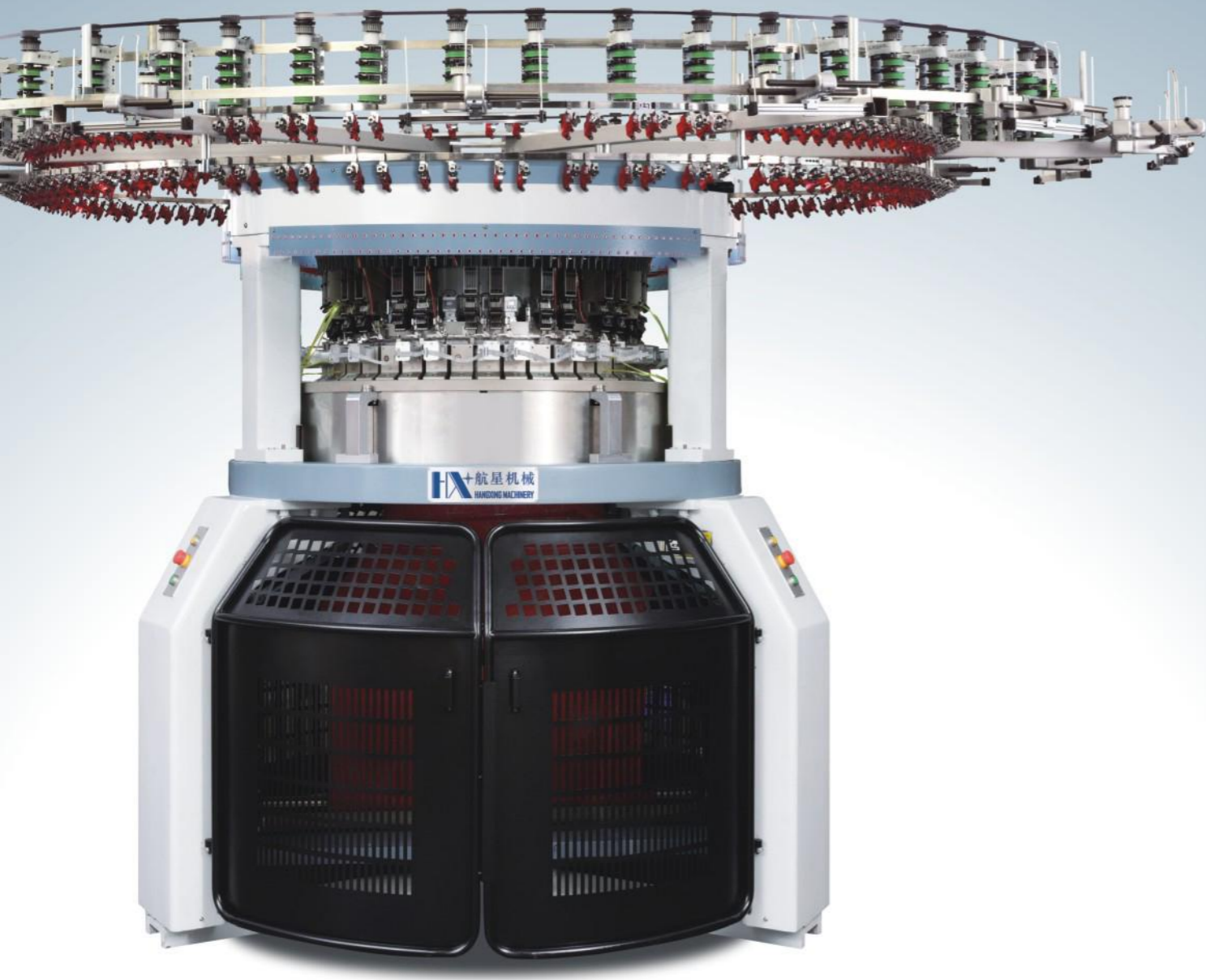
筒径 DIA	针距 GAUGE	路数 FEEDER
34"	14G-28G	54F/64F
36"		58F/68F
38"		60F/72F
范围(Dia Range):34"-48"		

产量参照表 PRODUCTION REFERENCE TABLE

布种 Fabric	机型 Model	尺寸 DIA	针数 GAUGE	路数 FEEDER	转速/分钟 Speed/min (RPM)	重量 Weight (KG)	24小时产量 24-hour output(KG)	安装尺寸 Install space(MM) 宽W*长L*高H
双面正反面提花布 Double reversible jacquard	HX-A-LH 上下两面电脑提花机	30"	18G	56F	20	3400KG	250(+20%)	4800*3800*3000
		30"	22G	56F	18	3400KG	220(+20%)	4800*3800*3000
		34"	18G	64F	18	3800KG	300(+20%)	5000*4000*3000
		34"	22G	64F	16	3800KG	270(+20%)	5000*4000*3000
		38"	18G	72F	16	4200KG	350(+20%)	5200*4200*3000
		38"	22G	72F	15	4200KG	320(+20%)	5200*4200*3000

(通用) 温度(Temperature): 5-60℃ 油耗(Oil consumption): 0.15-0.26L/DAY 电耗(Power consumption): 2.2-2.8KW/H 气压(Air press): 3KG/BAR
气耗(Air consumption): 0.3-0.4m³/L/min 纱织(棉纱)Sewing(cotton yarn): 18G→20S/1+150D+600D 22G→30S/1+150D+600D

注: 以上数据基于常规工艺 Above data is based on conventional process (100%生产效率参考值 "100% Production Efficiency Reference Value")



HX-A-QT

MULTIPLE-FUNCTIONAL BOUNDARY
JACQUARD CIRCULAR
KNITTING MACHINE

多功能电脑起脚提花机

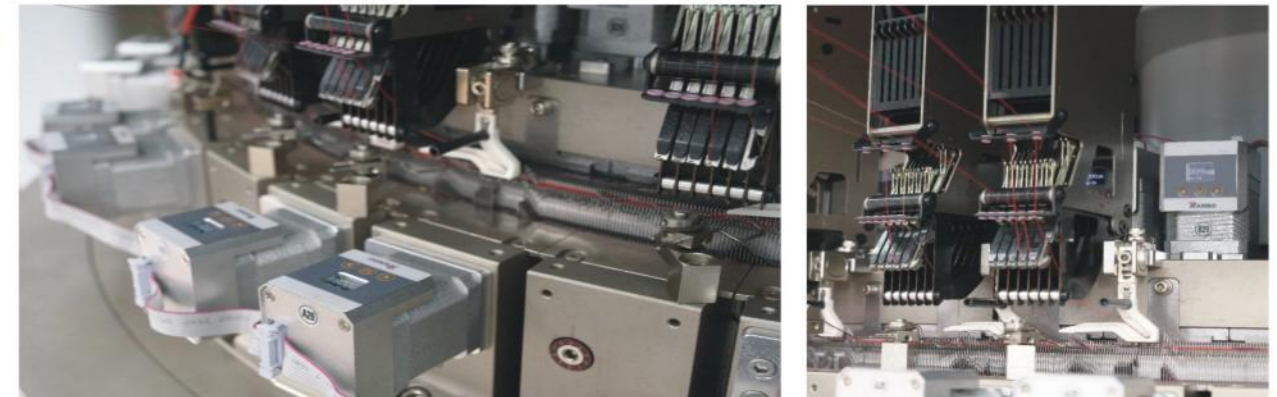


适用原料 MATERIAL

纯棉、化纤、混纺、人棉、真丝……
Cotton, Polyester, T/C, Rayon, Silk……

机台特性 MACHINE CHARACTERISTIC

HX-A-QT 专用部件 THE PARTS FOR HX-A-QT ONLY



- 自研提花系统采用ARM架构的微处理控制器、触屏式面板，支持花型预览。
- 心脏部件采用航空钛铝合金材料，机身轻、转速高，易散热，延长耗材寿命。
- 实时电子压针系统，在花型编织过程中调节三角轨迹，极大提升了布种的设计多样性。
- 航星新款变色头：免拆卸，结构稳定，易清理，不积飞毛。
- 航星新款变色头：采用专利设计，针对不同成分、粗细的编织原料，都能切割自如，夹线牢固且无沙尾。
- 采用上三（成圈，集圈，浮线），下三（成圈，集圈，浮线）高速不发热选针技术，极大的延长了选针器的使用寿命，降低了使用成本。
- The self-developed jacquard system is equipped with an ARM architecture-based microprocessor controller and a touch-screen panel, and supports pattern preview.
- The heart components are made of aviation titanium aluminum alloy material, processed in one piece for universal use. With a light weight body, high rotation speed, and efficient heat dissipation for extended consumable lifespan.
- The real-time electronic needle pressing system adjusts the cam track during pattern weaving, which greatly enhances the design diversity of fabric types.
- Hangxing's new finger set: Dismantling-free, structurally stable, easy cleaning and fluff-free.
- Hangxing's new finger set: Adopts a patented design, which ensures smooth cutting, secure thread clamping, and no yarn tail residue for weaving materials of different compositions and thicknesses.
- Using the upper-three(Knit,Tuck,Welt) and lower-three(Knit,Tuck,Welt) high-speed non-heating needle selection technology significantly extends the service of the actuator and reduces operating costs.

常规机型参数 REGULAR MODEL

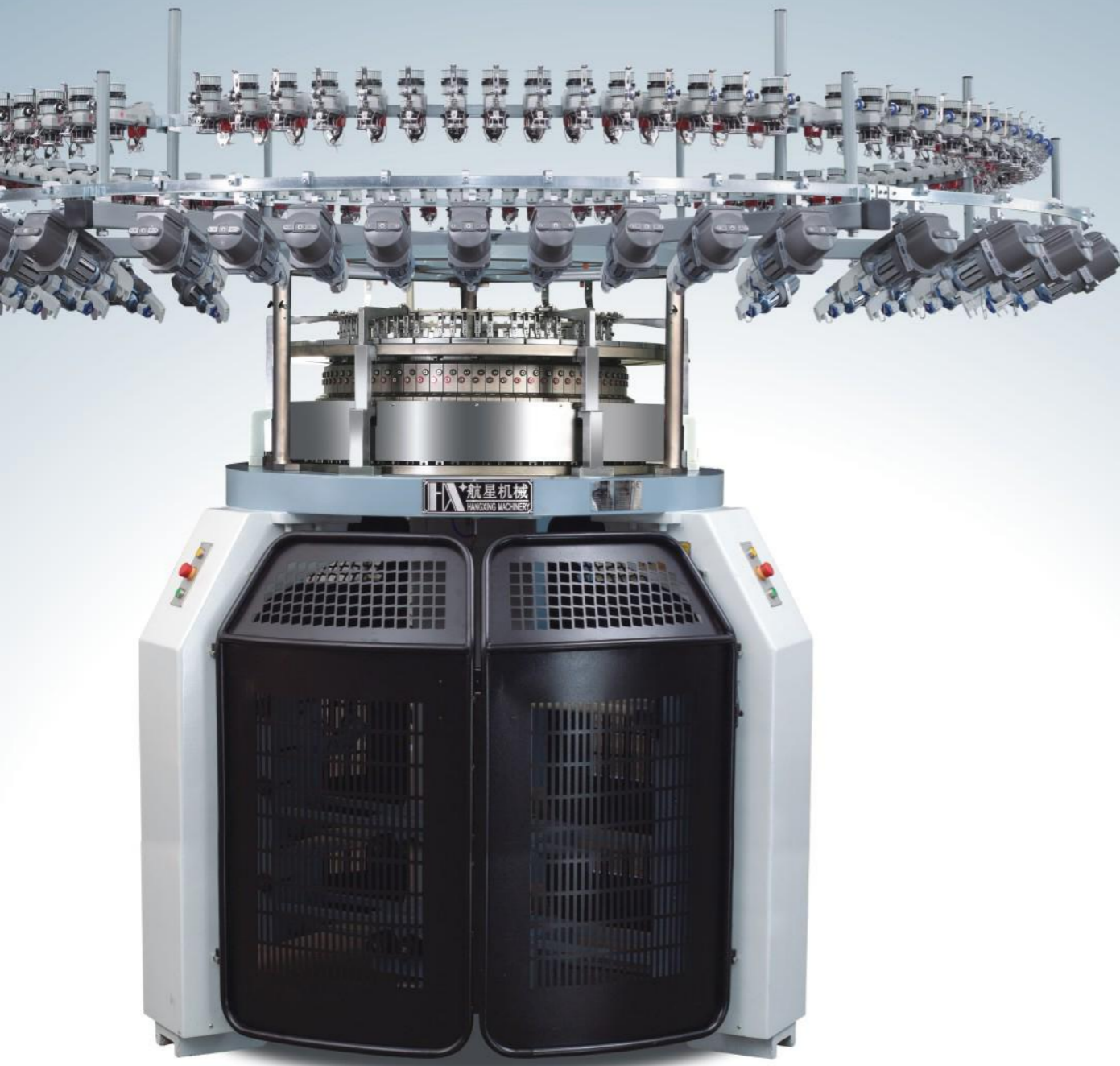
筒径 DIA	针距 GAUGE	路数 FEEDER
34"	14G-22G	42F
36"		45F
38"		48F
范围(Dia Range): 34"-42"		

产量参照表 PRODUCTION REFERENCE TABLE

布种 Fabric	机型 Model	尺寸 DIA	针数 GAUGE	路数 FEEDER	转速/分钟 Speed/min (RPM)	重量 Weight (KG)	24小时产量 24-hour output(KG)	安装尺寸 Install space(MM) 宽W*长L*高H
起脚提花 Flating jacquard	HX-A-QT 多功能电脑起脚调线提花机	30"	18G	39F	16	3400KG	120(+20%)	4600*4600*3200
		30"	22G	39F	16	3400KG	125(+20%)	4600*4600*3200
		34"	18G	45F	14	3800KG	125(+20%)	4800*4800*3200
		34"	22G	45F	14	3800KG	130(+20%)	4800*4800*3200
		38"	18G	50F	13	4200KG	130(+20%)	5000*5000*3200
		38"	22G	50F	13	4200KG	130(+20%)	5000*5000*3200

(通用) 温度(Temperature): 5-60°C 油耗(Oil consumption): 0.15-0.26L/DAY 电耗(Power consumption): 2.2-2.8KW/H
气压(Air press): 3KG/BAR 气耗(Air consumption): 0.3-0.4m³/min 纱织(棉纱)Sewing(cotton yarn): 18G→30S/1 22G→40S/1

注: 以上数据基于常规工艺 Above data is based on conventional process (100%生产效率参考值 "100% Production Efficiency Reference Value")



HX-A-MH
TERRY COMPUTERIZED JACQUARD
CIRCULAR KNITTING MACHINE

毛巾电脑提花机



适用原料 MATERIAL

纯棉、化纤、混纺、人棉、真丝……
Cotton, Polyester, T/C, Rayon, Silk……

机台特性 MACHINE CHARACTERISTIC

HX-A-MH 专用部件 THE PARTS FOR HX-A-MH ONLY



- 自研提花系统采用ARM架构的微处理控制器、触屏式面板，支持花型预览。
- 心脏部件采用航空钛铝合金材料，机身轻、转速高，易散热，延长耗材寿命。
- 压针旋钮专利设计，往复精度高，减少50%调机时间，满足高精密织物需求。
- 采用高速三工位（成圈、集圈、浮线）不发热选针技术，极大的延长了选针器的使用寿命，降低了使用成本。
- The self-developed jacquard system is equipped with an ARM architecture-based microprocessor controller and a touch-screen panel, and supports pattern preview.
- The heart components are made of aviation titanium aluminum alloy material, processed in one piece for universal use. With a light weight body, high rotation speed, and efficient heat dissipation for extended consumable lifespan.
- Patented presser needle knob design: High reciprocating precision, reduced adjustment time by 50%, meeting high-precision fabric requirements.
- Using high-speed three level(Knit,Tuck,Welt)non-heating magnetic needle selection significantly extends the service life of the actuator and reduces operating costs.

常规机型参数 REGULAR MODEL

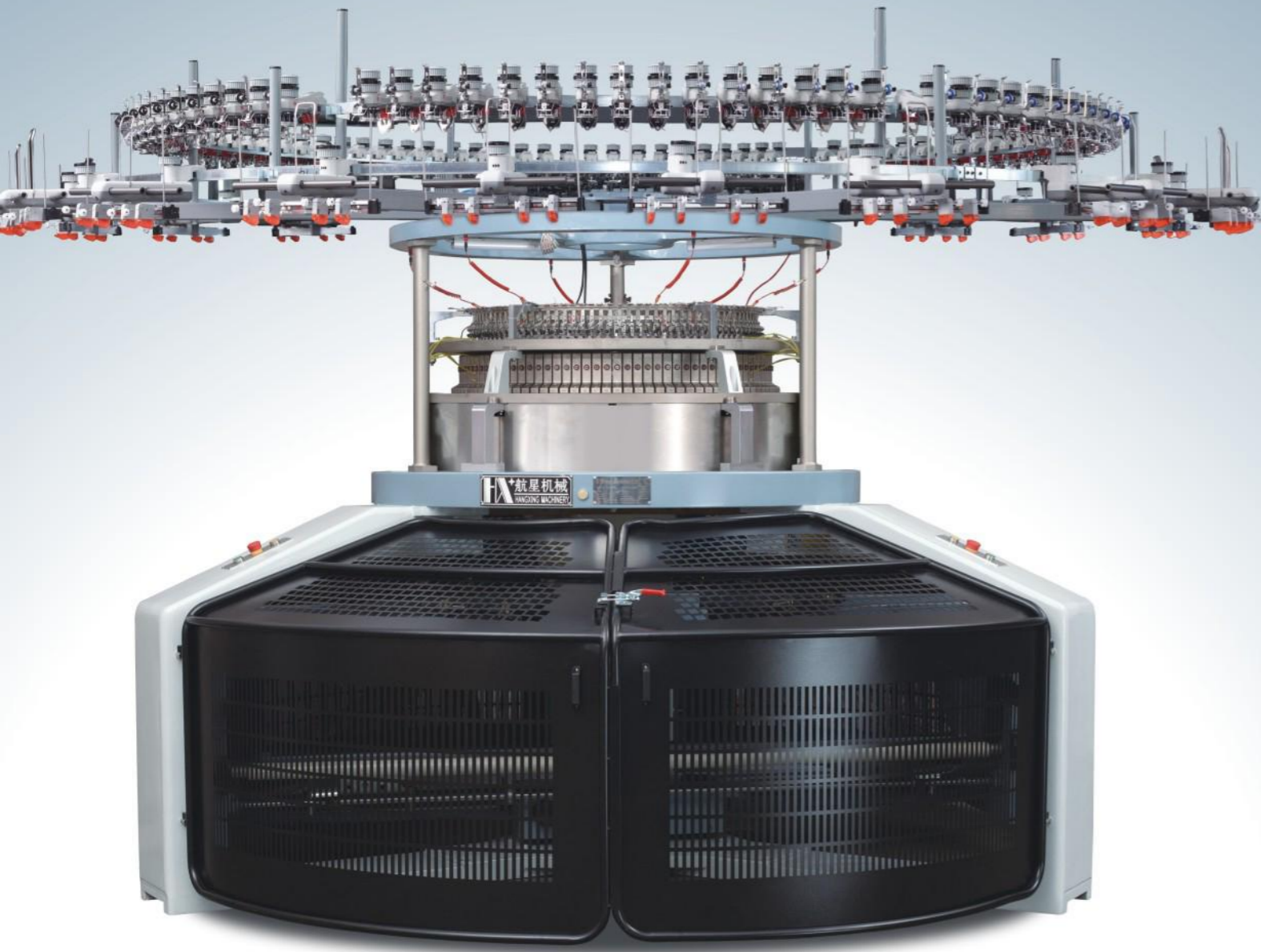
筒径 DIA	针距 GAUGE	路数 FEEDER
26"	18G-24G	62F
30"		36F(叶片提花) Sinker jacquard
34"		72F(飞线提花) Flying thread jacquard

范围(Dia Range):26"-40" 注:可做叶片提花/飞线提花 Capable of sinker jacquard and flying thread jacquard

产量参照表 PRODUCTION REFERENCE TABLE

布种 Fabric	机型 Model	尺寸 DIA	针数 GAUGE	路数 FEEDER	转速/分钟 Speed/min (RPM)	重量 Weight (KG)	24小时产量 24-hour output(KG)	安装尺寸 Install space(MM) 宽W*长L*高H
毛巾提花布 Terry jacquard	HX-A-MH 毛巾电脑提花机	30"	18G	45F	18	2800KG	250(+20%)	4800*3800*3000
		30"	22G	36F	16	2800KG	200(+20%)	4800*3800*3000
		34"	18G	50F	18	3200KG	280(+20%)	5000*4000*3000
		34"	22G	40F	16	3200KG	230(+20%)	5000*4000*3000
		38"	18G	56F	18	3600KG	300(+20%)	5200*4200*3000
		38"	22G	45F	16	3600KG	250(+20%)	5200*4200*3000

(通用) 温度(Temperature): 5-60°C 油耗(Oil consumption): 0.15-0.26L/DAY 耗电(Power consumption): 2.2-2.8KW/H
气压(Air press): 3KG/BAR 气耗(Air consumption): 0.3-0.4m³/L/min 纱织(涤纶)Sewing(polyester): 18G→100D+150D 22G→75D+100D
注: 以上数据基于常规工艺 Above data is based on conventional process (100%生产效率参考值 "100% Production Efficiency Reference Value")



HX-A-SKH

SINGLE JERSEY OPEN WIDTH
JACQUARD CIRCULAR
KNITTING MACHINE

单面开幅电脑提花机



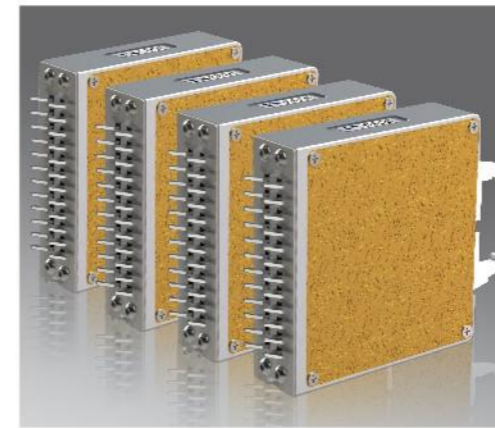
适用原料 MATERIAL

纯棉、化纤、混纺、人棉、真丝……
Cotton, Polyester, T/C, Rayon, Silk……

www.dghangxing.com

机台特性 MACHINE CHARACTERISTIC

HX-A-SKH 专用部件 THE PARTS FOR HX-A-SKH ONLY



- 自研系统采用ARM架构的微处理控制器、触屏式面板，支持花型预览。
- 心脏部件采用航空钛铝合金材料，机身轻、转速高，易散热，延长耗材寿命。
- 压针旋钮专利设计，往复精度高，减少50%调机时间，满足高精密织物需求。
- 可选配电子开幅布架，拉力更稳定，适合敏感材料。
- 采用高速三工位（成圈、集圈、浮线）不发热选针技术，极大的延长了选针器的使用寿命，降低了使用成本。
- The self-developed system is equipped with an ARM architecture-based microprocessor controller and a touch-screen panel, and supports pattern preview.
- The heart components are made of aviation titanium aluminum alloy material, processed in one piece for universal use. With a light weight body, high rotation speed, and efficient heat dissipation for extended consumable lifespan.
- Patented presser needle knob design: High reciprocating precision, reduced adjustment time by 50%, meeting high-precision fabric requirements.
- An electronic open-width take down is available as an option, which provides more stable tension and is suitable for sensitive materials.
- Using high-speed three level(Knit,Tuck,Welt)non-heating needle selection technology significantly extends the service life of the actuator and reduces operating costs.

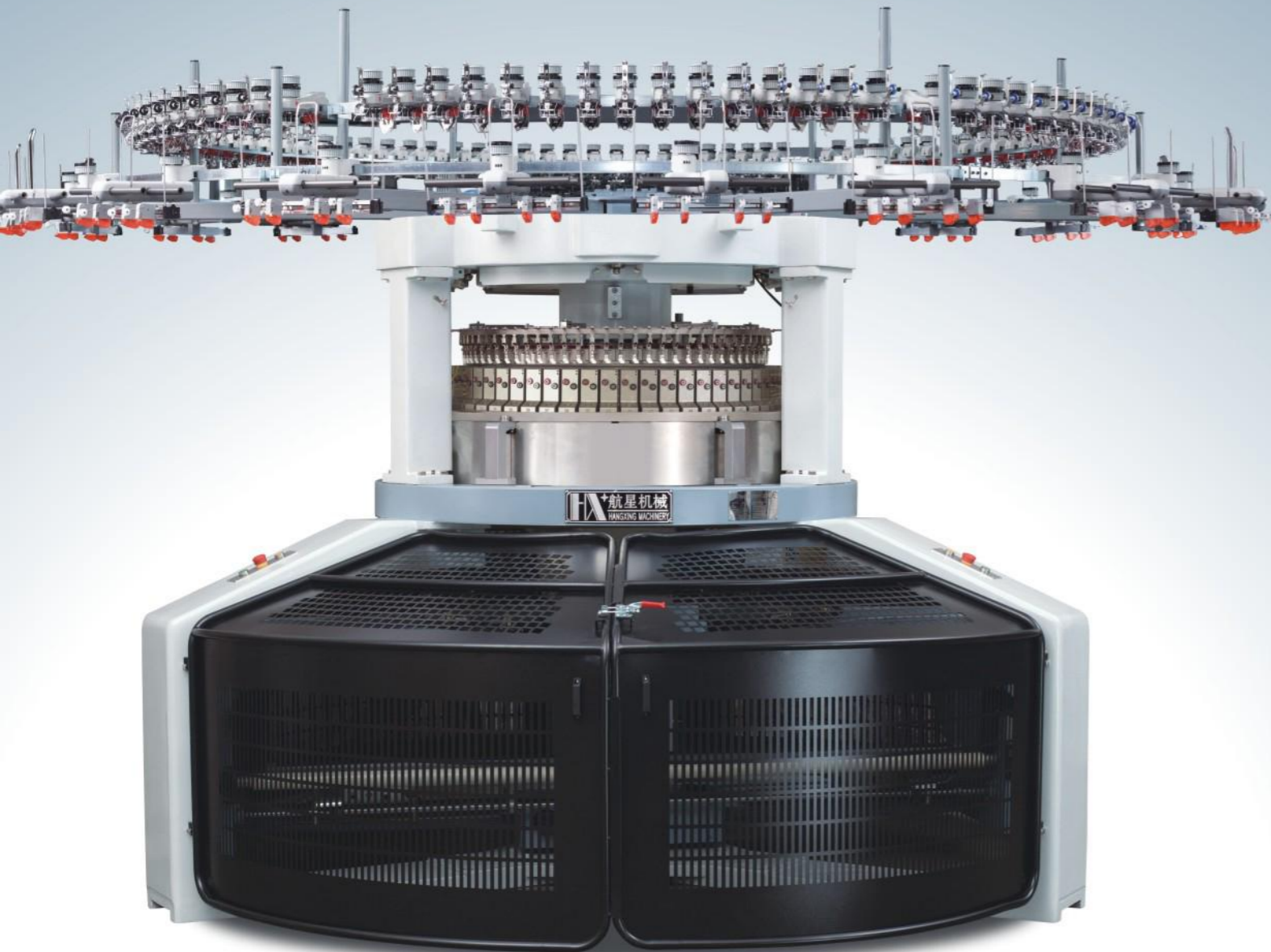
常规机型参数 REGULAR MODEL

筒径 DIA	针距 GAUGE	路数 FEEDER
30"	3G-40G	42F-60F
32"		50F-72F
34"		42F-72F
范围(Dia Range): 26"-38"		

产量参照表 PRODUCTION REFERENCE TABLE

布种 Fabric	机型 Model	尺寸 DIA	针数 GAUGE	路数 FEEDER	转速/分钟 Speed/min (RPM)	重量 Weight (KG)	24小时产量 24-hour output(KG)	安装尺寸 Install space(MM) 宽W*长L*高H
单面提花布 Single jacquard	HX-A-SKH 单面开幅 电脑提花机	30"	18G	48F	22	3400KG	160(+20%)	6800*4800*3200
		30"	28G	60F	20	3400KG	140(+20%)	6800*4800*3200
		34"	18G	64F	20	4000KG	180(+20%)	7000*5000*3200
		34"	28G	72F	18	4000KG	180(+20%)	7000*5000*3200
		38"	18G	72F	18	4600KG	210(+20%)	7200*5200*3200
		38"	28G	80F	16	4600KG	190(+20%)	7200*5200*3200

(通用) 温度(Temperature): 5-60℃ 油耗(Oil consumption): 0.15-0.26L/DAY 耗电(Power consumption): 2.2-2.8KW/H
气压(Air press): 3KG/BAR 气耗(Air consumption): 0.3-0.4m³/L/min 纱织(棉纱)Sewing(cotton yarn): 18G→30S/1 28G→40S/1
注: 以上数据基于常规工艺 Above data is based on conventional process (100%生产效率参考值 *100% Production Efficiency Reference Value*)



HX-A-DKH
DOUBLE JERSEY OPEN WIDTH
JACQUARD CIRCULAR
KNITTING MACHINE

双面开幅电脑提花机



适用原料 MATERIAL

纯棉、化纤、混纺、人棉、真丝……
Cotton, Polyester, T/C, Rayon, Silk……

机台特性 MACHINE CHARACTERISTIC

HX-A-DKH 专用部件 THE PARTS FOR HX-A-DKH ONLY



- 自研系统采用ARM架构的微处理控制器、触屏式面板，支持花型预览。
- 心脏部件采用航空钛铝合金材料，机身轻、转速高，易散热，延长耗材寿命。
- 压针旋钮专利设计，往复精度高，减少50%调机时间，满足高精度织物需求。
- 可选配电子开幅布架，拉力更稳定，适合敏感材料。
- 采用高速三工位（成圈、集圈、浮线）不发热选针技术，极大的延长了选针器的使用寿命，降低了使用成本。
- The self-developed system is equipped with an ARM architecture-based microprocessor controller and a touch-screen panel, and supports pattern preview.
- The heart components are made of aviation titanium aluminum alloy material, processed in one piece for universal use. With a light weight body, high rotation speed, and efficient heat dissipation for extended consumable lifespan.
- Patented presser needle knob design: High reciprocating precision, reduced adjustment time by 50%, meeting high-precision fabric requirements.
- An electronic open-width take down is available as an option, which provides more stable tension and is suitable for sensitive materials.
- Using high-speed three level(Knit,Tuck,Welt)non-heating needle selection technology significantly extends the service life of the actuator and reduces operating costs.

常规机型参数 REGULAR MODEL






筒径 DIA	针距 GAUGE	路数 FEEDER
30"	7G-36G	42F/54F
34"		42F/60F/72F
38"		48F/72F
范围(Dia Range):30"-40"		

产量参照表 PRODUCTION REFERENCE TABLE

布种 Fabric	机型 Model	尺寸 DIA	针数 GAUGE	路数 FEEDER	转速/分钟 Speed/min (RPM)	重量 Weight (KG)	24小时产量 24-hour output(KG)	安装尺寸 Install space(MM) 宽W*长L*高H
双面提花布 Double jacquard	HX-A-DKH 双面开幅电脑提花机	30"	18G	60F	22	3200KG	290(+20%)	6800*4800*3000
		30"	28G	60F	20	3200KG	185(+20%)	6800*4800*3000
		34"	18G	72F	20	3600KG	300(+20%)	7000*5000*3000
		34"	28G	72F	18	3600KG	220(+20%)	7000*5000*3000
		38"	18G	80F	18	4000KG	310(+20%)	7200*5200*3000
		38"	28G	80F	16	4000KG	230(+20%)	7200*5200*3000

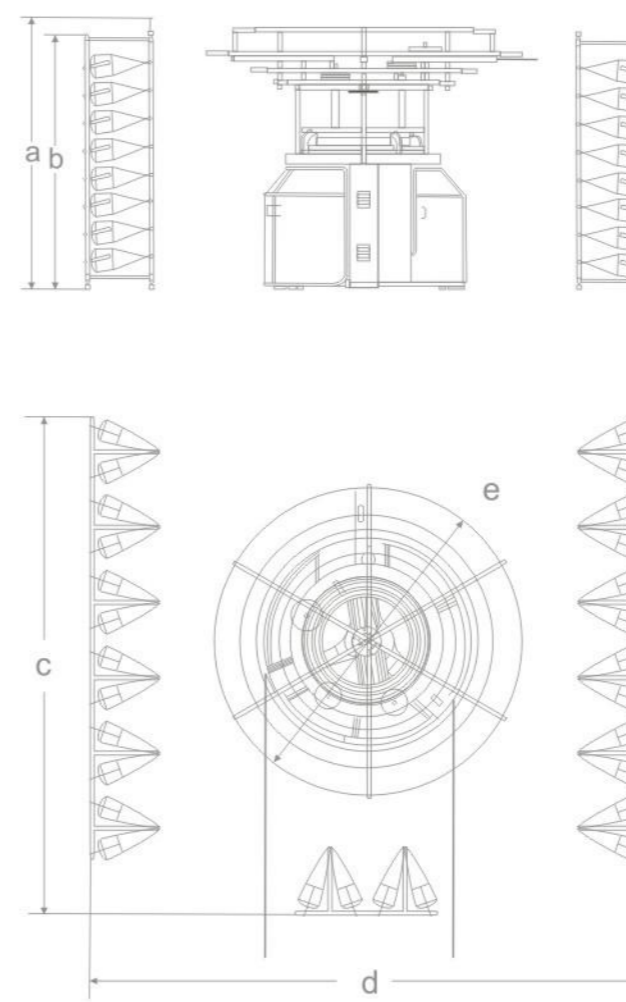
(通用) 温度(Temperature): 5-60℃ 油耗(Oil consumption): 0.15-0.26L/DAY 耗电(Power consumption): 2.2-2.8KW/H
气压(Air press): 3KG/BAR 气耗(Air consumption): 0.3-0.4m³/L/min 纱织(棉纱)Sewing(cotton yarn): 18G→30S/1 28G→50S/1
注: 以上数据基于常规工艺 Above data is based on conventional process (100%生产效率参考值 "100% Production Efficiency Reference Value")

TECHNICAL PARAMETERS

标准 STANDARD		可选配件 OPTIONAL COMPONENTS	
	机架 Machine Body 航星A型机架 (英国/德国钢丝跑道) Hangxing "A" Machine Body (England/Germany Bearing)	机架 Machine Body	
	织针 Needle 格罗茨 一款针筒织针 One type of cylinder needle	织针 Needle 韩国, 国产 Korea, China	
	三角 Cam • 生克三角 Sinker Cam • 成圈三角 Knit Cam • 集圈三角 Tuck Cam • 浮线三角 Miss Cam	三角 Cam 2跑, 4跑, 6跑	
	选针系统 Selection System 压电陶瓷二、三工位选针系统 Piezo ceramic two-, three level selection system	选针系统 Selection System 电磁铁二、三工位选针系统 Solenoid two-, three level selection system	
	卷布系统 Take down system 机械式变速卷/折布机 Mechanical change speed roll/fold type	卷布系统 Take down system 恒张力电子马达传动卷布机 Electronic motor transmit roll type	
	纱架 Side creel 组合排式 Row type	纱架 Side creel 三角架式 管道架式 Triangel side creel Tube side creel	
	输纱系统 Yarn feeder 电子储纱输纱器 (太阳洲/赛美格) 积极式输纱器 Electronic yarn storage Positive yarn storage (SUN/SMG) BRAND	输纱系统 Yarn feeder 美铭格电子储纱输纱器 (德国) 美铭格积极式输纱器 M-IRO electronic yarn storage M-IRO positive yarn storage (Germany)	
	控制系统 Controlled system 多功能数码控制面板 选针系统触屏控制器 Multi-fuction digital controlled panel Selection&touch controlled driver	控制系统 Controlled system 美铭格控制系统 Memminger electric controlled system	
	变频器 Inverter 德国尼得科 Nidec (German)	变频器 Inverter 日本三菱 Mitsubishi (Japan)	
	加油机 Lubricator 升松加油机 Shengsong lubricator (Taiwan)	加油机 Lubricator	



机器尺寸图 MACHINE BODY SIZE DRAWING



HX-A-ST	34"
a HEIGHT OF M/C	3200mm
b HEIGHT OF CREEL	2600mm
c WIDTH OF M/C	6500mm
d LENGTH OF M/C	6500mm
e DIA Max	2880mm

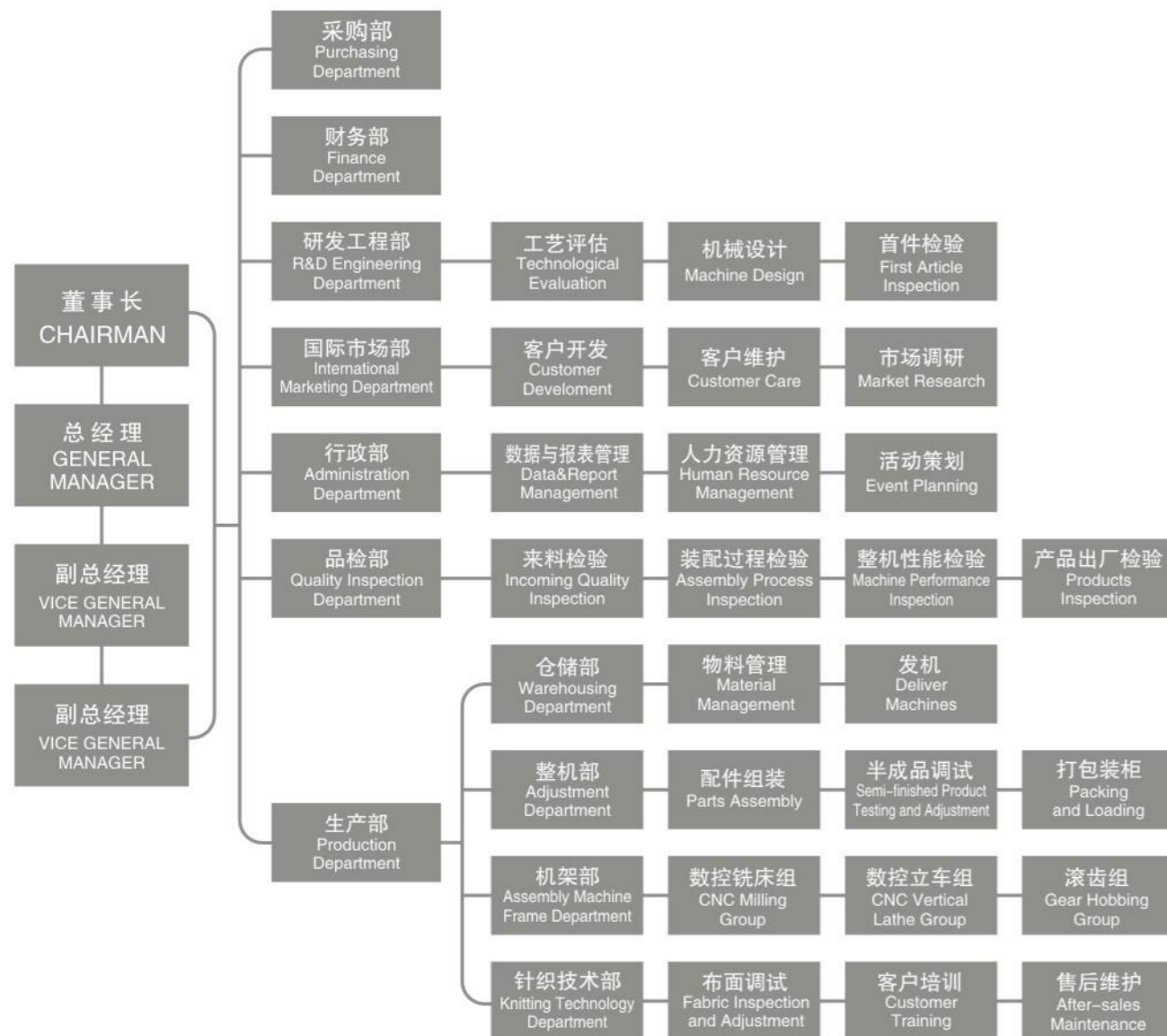


CORPORATE CULTURE & MANAGEMENT STRUCT

企业文化 & 管理架构

www.dghangxing.com

管理架构 MANAGEMENT STRUCT



企业文化 CORPORATE CULTURE

以针为笔，织就产业新未来

我们以针织机为载体，将技术创新融入每一根经纬线，致力于为全球纺织产业提供智能、高效、环保的针织解决方案。我们通过持续的技术突破和创新，帮助客户降低生产成本、提升产品竞争力，为行业可持续发展注入源源不断的动力。

With Needles as Brushes, We Weave a New Future for the Textile Industry.

We adhere to the path of technological innovation and are committed to providing intelligent, efficient, and environmentally friendly knitting solutions for the global textile industry. We help customers reduce production costs, enhance product competitiveness, and inject a continuous driving force into the sustainable development of the industry.

企业精神

Company Spirit

求实 诚信 创新
Realistic, Integrity, Innovation.

企业宗旨

Company Purpose

追求卓越，为客户创造价值
Pursue perfect, Create profit for customer.

发展理念

Development Concept

重品质、求创新，不断开拓进取
Emphasize quality, Keep innovation, Constantly forge ahead.

超越自我 共创辉煌
SURPASSING SELF, WIN SUCCESS TOGETHER



CERTIFICATION AND TECHNOLOGY R&D

资质证书 & 技术研发

www.dghangxing.com

资质证书 CERTIFICATION

航星专业的研发团队一直对核心技术的执着追求、不断创新、敢于突破，取得了丰硕的创新成果。

"Hangxing" professional R&B team persist in pursuing knitting machine key technology, Innovate constantly,dear to break the rule and got the innovation plentiful achievement.



技术研发 TECHNOLOGY R&D

"分析市场潮流，满足客户需求，探求新的技术，创造行业精品"是航星公司技术研发的指导理念。

航星自创办以来，于电脑针织大圆机领域积累了丰富的经验和技术力量、良好的实验测试分析与研发条件，在吸收国内外一切优势技术的基础上，航星始终坚持自主创新，开发出一系列的电脑特种针织大圆机：调线系列、提花系列、移圈系列、粗针提花系列、细针提花系列...并将不断努力地为客户开发、提供先进的针织机械。

"Analyzing market trends, meeting customer needs, exploring new technologies, and creating perfect products" is the guiding philosophy for the technology R&D of Hangxing knitting machinery co.,ltd.

Since its establishment, Hangxing has accumulated abundant experience, technical capabilities, sound experimental testing, analysis and R&D conditions in the field of computerized circular knitting machines. Based on absorbing all advantageous technologies at home and abroad, Hangxing has always adhered to independent innovation and developed a series of computerized special circular knitting machines,stripper series,jacquard series,transferred series,thick & thin jacquard series... and we will continue to strive to develop and provide advanced knitting machinery for customers.



SELLING NETWORK

销售网络

www.dghangxing.com

2009年开始布局拓展海外市场，开启全球化市场。至今，始终以“品质”与“服务”为核心：产品端遵循国际标准，保障性能稳定且适配多国需求；服务端搭建跨区域售后网络，组建多语言团队提供快速支持。

凭借优异的产品质量和高效的售后服务，产品远销东南亚、中亚、欧洲、中南美洲等20+国家，现年产量稳定超1000台。

Since 2009, we began to layout and expand overseas markets, initiating a globalization markets. Up to now, we have always been committed to 'Quality' and 'Service' as our core principles. The product side adheres to international standards to ensure stable performance and adapt to the requirements of various countries. The service side builds a cross-regional after-sales network and assembles a multilingual team to provide rapid support.

Base on our superior product quality and efficient after-sales service, our products are now exported to over 20 countries across Southeast Asia, Central Asia, Europe, and Central/South America, with the current annual output is steadily over 1,000 units.

43/₄₄
HANG XING
KNITTING MACHINERY



MAIN OVERSEAS MARKETS

航星机械 中国制造
HANG XING MACHINERY
MADE IN CHINA

